

## Product datasheet for TA334327

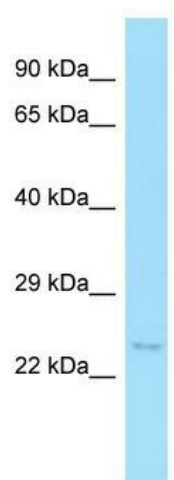
### MOSPD1 Rabbit Polyclonal Antibody

#### Product data:

Product Type:	Primary Antibodies
Applications:	WB
Recommended Dilution:	WB
Reactivity:	Human
Host:	Rabbit
Isotype:	IgG
Clonality:	Polyclonal
Immunogen:	The immunogen for anti-MOSPD1 antibody is: synthetic peptide directed towards the middle region of Human MOSPD1. Synthetic peptide located within the following region: SCHYGVIDKFRLQVSEQSQRKALGRKEVVATLLPSAKEQQKEEEKRLKE
Formulation:	Liquid. Purified antibody supplied in 1x PBS buffer with 0.09% (w/v) sodium azide and 2% sucrose.
Purification:	Affinity Purified
Conjugation:	Unconjugated
Storage:	Store at -20°C as received.
Stability:	Stable for 12 months from date of receipt.
Predicted Protein Size:	23 kDa
Gene Name:	motile sperm domain containing 1
Database Link:	<a href="#">NP_062456</a> <a href="#">Entrez Gene 56180 Human</a> <a href="#">Q9UJG1</a>
Background:	The function of this protein remains unknown.
Synonyms:	DJ473B4
Note:	Immunogen Sequence Homology: Dog: 100%; Pig: 100%; Rat: 100%; Human: 100%; Mouse: 100%; Bovine: 100%; Rabbit: 100%; Zebrafish: 100%; Guinea pig: 100%; Horse: 93%
Protein Families:	Transmembrane


[View online »](#)

## Product images:



Host: Rabbit; Target Name: MOSPD1; Sample  
Tissue: HCT15 Whole Cell lysates; Antibody  
Dilution: 1.0 ug/ml