

Product datasheet for **TA334325**

MEPCE Rabbit Polyclonal Antibody

Product data:

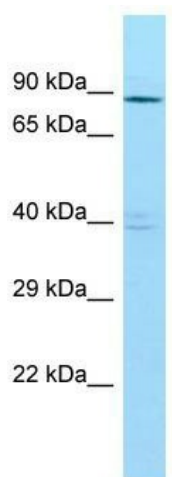
Product Type:	Primary Antibodies
Applications:	WB
Recommended Dilution:	WB
Reactivity:	Human
Host:	Rabbit
Isotype:	IgG
Clonality:	Polyclonal
Immunogen:	The immunogen for anti-MEPCE antibody is: synthetic peptide directed towards the middle region of Human MEPCE. Synthetic peptide located within the following region: HRHRGQHHQQQAAGGSESHVPPTAPLTPLLHGEGASQQPRHRGQNRDA
Formulation:	Liquid. Purified antibody supplied in 1x PBS buffer with 0.09% (w/v) sodium azide and 2% sucrose. <i>Note that this product is shipped as lyophilized powder to China customers.</i>
Purification:	Affinity Purified
Conjugation:	Unconjugated
Storage:	Store at -20°C as received.
Stability:	Stable for 12 months from date of receipt.
Predicted Protein Size:	76 kDa
Gene Name:	methylphosphate capping enzyme
Database Link:	NP_062552 Entrez Gene 56257 Human Q7L2J0
Background:	MEPCE is a S-adenosyl-L-methionine-dependent methyltransferase that adds a methylphosphate cap at the 5'-end of 7SK snRNA, leading to stabilize it.
Synonyms:	BCDIN3
Note:	Immunogen Sequence Homology: Human: 100%; Pig: 86%; Guinea pig: 86%; Dog: 79%; Rat: 79%; Rabbit: 79%



[View online »](#)

Protein Families: Druggable Genome

Product images:



Host: Rabbit; Target Name: MEPCE; Sample Tissue: NCI-H226 Whole Cell lysates; Antibody Dilution: 1.0 ug/ml; MEPCE is supported by BioGPS gene expression data to be expressed in NCIH226