

Product datasheet for **TA334322**

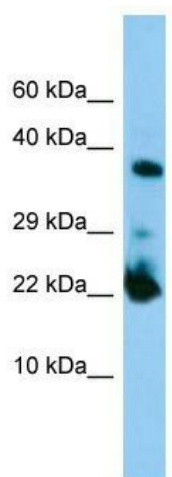
MACROD2 Rabbit Polyclonal Antibody

Product data:

Product Type:	Primary Antibodies
Applications:	WB
Recommended Dilution:	WB
Reactivity:	Human
Host:	Rabbit
Isotype:	IgG
Clonality:	Polyclonal
Immunogen:	The immunogen for anti-MACROD2 antibody is: synthetic peptide directed towards the C-terminal region of Human MACROD2. Synthetic peptide located within the following region: GSSDLENTPGPDVEMNSQVDKVNPTESQQEDQLIAGAQDEAKEQRNGTK
Formulation:	Liquid. Purified antibody supplied in 1x PBS buffer with 0.09% (w/v) sodium azide and 2% sucrose. <i>Note that this product is shipped as lyophilized powder to China customers.</i>
Purification:	Affinity Purified
Conjugation:	Unconjugated
Storage:	Store at -20°C as received.
Stability:	Stable for 12 months from date of receipt.
Predicted Protein Size:	23 kDa
Gene Name:	MACRO domain containing 2
Database Link:	NP_001028259 Entrez Gene 140733 Human A1Z1Q3
Background:	MACROD2 deacetylates O-acetyl-ADP ribose, a signaling molecule generated by the deacetylation of acetylated lysine residues in histones and other proteins.
Synonyms:	C20orf133
Note:	Immunogen Sequence Homology: Human: 100%; Horse: 83%



[View online »](#)

Product images:

Host: Rabbit; Target Name: MACROD2; Sample
Tissue: HepG2 Whole Cell lysates; Antibody
Dilution: 1.0 ug/ml