

Product datasheet for TA334321

LY6G5C Rabbit Polyclonal Antibody

Product data:

Product Type:	Primary Antibodies
Applications:	WB
Recommended Dilution:	WB
Reactivity:	Human
Host:	Rabbit
Isotype:	IgG
Clonality:	Polyclonal
Immunogen:	The immunogen for anti-LY6G5C antibody is: synthetic peptide directed towards the C-terminal region of Human LY6G5C. Synthetic peptide located within the following region: CITLHKKNSSGSDVMVSDCRSKEQMSDCSNTRTSPVSGFWIFSQYCFLDF
Formulation:	Liquid. Purified antibody supplied in 1x PBS buffer with 0.09% (w/v) sodium azide and 2% sucrose. <i>Note that this product is shipped as lyophilized powder to China customers.</i>
Purification:	Affinity Purified
Conjugation:	Unconjugated
Storage:	Store at -20°C as received.
Stability:	Stable for 12 months from date of receipt.
Predicted Protein Size:	25 kDa
Gene Name:	lymphocyte antigen 6 complex, locus G5C
Database Link:	NP_079538 Entrez Gene 80741 Human Q5SRR4
Background:	LY6G5C belongs to a cluster of leukocyte antigen-6 (LY6) genes located in the major histocompatibility complex (MHC) class III region on chromosome 6. Members of the LY6 superfamily typically contain 70 to 80 amino acids, including 8 to 10 cysteines. Most LY6 proteins are attached to the cell surface by a glycosylphosphatidylinositol (GPI) anchor that is directly involved in signal transduction.
Synonyms:	C6orf20; G5C; LY6G5CA; LY6G5CB; NG33

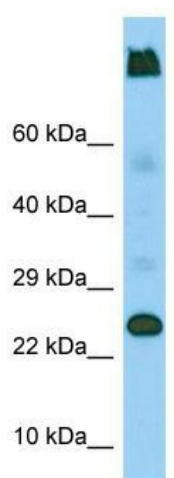


[View online »](#)

Note: Immunogen Sequence Homology: Human: 100%; Bovine: 92%; Dog: 85%; Rat: 77%; Rabbit: 77%

Protein Families: Transmembrane

Product images:



Host: Rabbit; Target Name: LY6G5C; Sample Tissue: U937 Whole Cell lysates; Antibody Dilution: 1.0 ug/ml