

Product datasheet for **TA334320**

LUZP4 Rabbit Polyclonal Antibody

Product data:

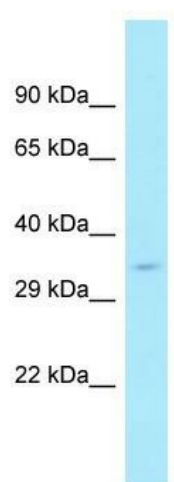
Product Type:	Primary Antibodies
Applications:	WB
Recommended Dilution:	WB
Reactivity:	Human
Host:	Rabbit
Isotype:	IgG
Clonality:	Polyclonal
Immunogen:	The immunogen for anti-LUZP4 antibody is: synthetic peptide directed towards the N-terminal region of Human LUZP4. Synthetic peptide located within the following region: YKELEGTNAEEEEKNKRQNHSSKESPSRQQSKAHRHRHRRGYSRCRSNSE
Formulation:	Liquid. Purified antibody supplied in 1x PBS buffer with 0.09% (w/v) sodium azide and 2% sucrose. <i>Note that this product is shipped as lyophilized powder to China customers.</i>
Purification:	Affinity Purified
Conjugation:	Unconjugated
Storage:	Store at -20°C as received.
Stability:	Stable for 12 months from date of receipt.
Predicted Protein Size:	34 kDa
Gene Name:	leucine zipper protein 4
Database Link:	NP_057467 Entrez Gene 51213 Human Q9P127
Background:	This gene encodes a protein which contains two sets of heptad repeats in the N-terminus; the C-terminal most repeats form a leucine zipper domain. The presence of a leucine zipper domain suggests the protein may have DNA-binding activity and the protein has been shown to localize with a spliceosome protein.
Synonyms:	CT-8; CT-28; CT28; HOM-TE5-85
Note:	Immunogen Sequence Homology: Human: 100%; Yeast: 91%



[View online »](#)

Protein Families: Druggable Genome

Product images:



WB Suggested Anti-LUZP4 Antibody; Titration: 1.0 ug/ml; Positive Control: MCF7 Whole Cell