

Product datasheet for **TA334319**

LUZP4 Rabbit Polyclonal Antibody

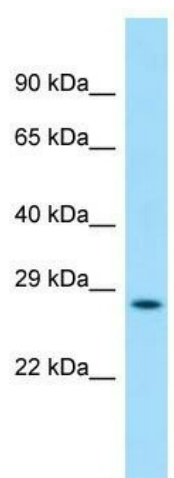
Product data:

| | |
|-------------------------|---|
| Product Type: | Primary Antibodies |
| Applications: | WB |
| Recommended Dilution: | WB |
| Reactivity: | Human |
| Host: | Rabbit |
| Isotype: | IgG |
| Clonality: | Polyclonal |
| Immunogen: | The immunogen for anti-LUZP4 antibody is: synthetic peptide directed towards the C-terminal region of Human LUZP4. Synthetic peptide located within the following region: TQRDLIATQRDLIVTQRDLVATERDLINQSGRSHGQSERHQRYSTGKNTI |
| Formulation: | Liquid. Purified antibody supplied in 1x PBS buffer with 0.09% (w/v) sodium azide and 2% sucrose. <i>Note that this product is shipped as lyophilized powder to China customers.</i> |
| Purification: | Affinity Purified |
| Conjugation: | Unconjugated |
| Storage: | Store at -20°C as received. |
| Stability: | Stable for 12 months from date of receipt. |
| Predicted Protein Size: | 25 kDa |
| Gene Name: | leucine zipper protein 4 |
| Database Link: | NP_057467 Entrez Gene 51213 Human Q9P127 |
| Background: | The function of this protein remains unknown. |
| Synonyms: | CT-8; CT-28; CT28; HOM-TES-85 |
| Note: | Immunogen Sequence Homology: Human: 100% |
| Protein Families: | Druggable Genome |



[View online »](#)

Product images:



Host: Rabbit; Target Name: LUZP4; Sample
Tissue: 293T Whole Cell lysates; Antibody
Dilution: 1.0 ug/ml