

## Product datasheet for **TA334318**

### KRT35 Rabbit Polyclonal Antibody

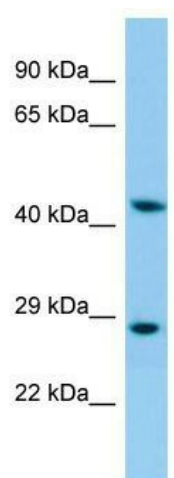
#### Product data:

Product Type:	Primary Antibodies
Applications:	WB
Recommended Dilution:	WB
Reactivity:	Human
Host:	Rabbit
Isotype:	IgG
Clonality:	Polyclonal
Immunogen:	The immunogen for anti-KRT35 antibody is: synthetic peptide directed towards the C-terminal region of Human KRT35. Synthetic peptide located within the following region: ETEARYSSQLAQMCMITNVEAQLAEIRADLERQNQEYQVLLDVRARLEC
Formulation:	Liquid. Purified antibody supplied in 1x PBS buffer with 0.09% (w/v) sodium azide and 2% sucrose.
Purification:	Affinity Purified
Conjugation:	Unconjugated
Storage:	Store at -20°C as received.
Stability:	Stable for 12 months from date of receipt.
Predicted Protein Size:	46 kDa
Gene Name:	keratin 35
Database Link:	<a href="#">NP_002271</a> <a href="#">Entrez Gene 3886 Human</a> <a href="#">Q92764</a>
Background:	The function of this protein remains unknown.
Synonyms:	Ha-5; HA5; hHa5; KRTHA5
Note:	Immunogen Sequence Homology: Dog: 100%; Pig: 100%; Rat: 100%; Horse: 100%; Human: 100%; Mouse: 100%; Sheep: 100%; Bovine: 100%; Rabbit: 100%; Goat: 93%



[View online »](#)

## Product images:



Host: Rabbit; Target Name: KRT35; Sample  
Tissue: HepG2 Whole Cell lysates; Antibody  
Dilution: 1.0 ug/ml