

Product datasheet for **TA334317**

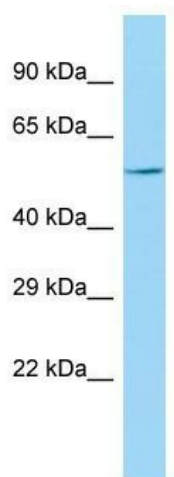
KPNA7 Rabbit Polyclonal Antibody

Product data:

Product Type:	Primary Antibodies
Applications:	WB
Recommended Dilution:	WB
Reactivity:	Human
Host:	Rabbit
Isotype:	IgG
Clonality:	Polyclonal
Immunogen:	The immunogen for anti-KPNA7 antibody is: synthetic peptide directed towards the C-terminal region of Human KPNA7. Synthetic peptide located within the following region: VKIVLIILDVISCILQAAEKRSEKENLCLLIEELGGIDRIEALQLHENRQ
Formulation:	Liquid. Purified antibody supplied in 1x PBS buffer with 0.09% (w/v) sodium azide and 2% sucrose.
Purification:	Affinity Purified
Conjugation:	Unconjugated
Storage:	Store at -20°C as received.
Stability:	Stable for 12 months from date of receipt.
Predicted Protein Size:	56 kDa
Gene Name:	karyopherin subunit alpha 7
Database Link:	NP_001139187 Entrez Gene 402569 Human A9QM74
Background:	KPNA7 functions in nuclear protein import.
Synonyms:	IPOA8
Note:	Immunogen Sequence Homology: Human: 100%; Dog: 93%; Yeast: 90%; Pig: 79%; Bovine: 79%



[View online »](#)

Product images:

Host: Rabbit; Target Name: KPNA7; Sample
Tissue: U937 Whole Cell lysates; Antibody
Dilution: 1.0 ug/ml