

## Product datasheet for **TA334316**

### KIF24 Rabbit Polyclonal Antibody

#### Product data:

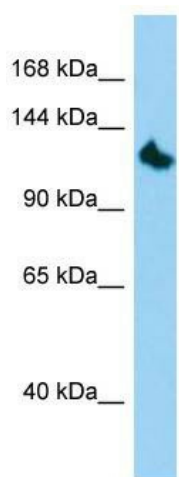
Product Type:	Primary Antibodies
Applications:	WB
Recommended Dilution:	WB
Reactivity:	Human
Host:	Rabbit
Isotype:	IgG
Clonality:	Polyclonal
Immunogen:	The immunogen for anti-KIF24 antibody is: synthetic peptide directed towards the N-terminal region of Human KIF24. Synthetic peptide located within the following region: IRQNTSEKQNPWTEMEKIRVCVRKRPLGMREVRERGEINIITVEDKETLLV
Formulation:	Liquid. Purified antibody supplied in 1x PBS buffer with 0.09% (w/v) sodium azide and 2% sucrose. <i>Note that this product is shipped as lyophilized powder to China customers.</i>
Purification:	Affinity Purified
Conjugation:	Unconjugated
Storage:	Store at -20°C as received.
Stability:	Stable for 12 months from date of receipt.
Predicted Protein Size:	140 kDa
Gene Name:	kinesin family member 24
Database Link:	<a href="#">NP_919289</a> <a href="#">Entrez Gene 347240 Human Q5T7B8</a>
Background:	Kinesins, such as KIF24, are microtubule-dependent ATPases that function as molecular motors. They play important roles in intracellular vesicle transport and cell division.
Synonyms:	bA571F15.4; C9orf48
Note:	Immunogen Sequence Homology: Human: 100%; Pig: 93%; Rat: 93%; Horse: 93%; Bovine: 93%; Guinea pig: 93%; Dog: 92%; Rabbit: 77%



[View online »](#)

Protein Families: Druggable Genome

### Product images:



Host: Rabbit; Target Name: KIF24; Sample Tissue: HepG2 Whole Cell lysates; Antibody Dilution: 1.0 ug/ml; KIF24 is supported by BioGPS gene expression data to be expressed in HepG2