

Product datasheet for **TA334312**

PDZD6 (INTU) Rabbit Polyclonal Antibody

Product data:

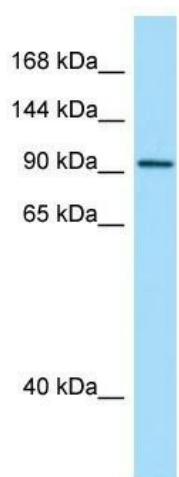
Product Type:	Primary Antibodies
Applications:	WB
Recommended Dilution:	WB
Reactivity:	Human
Host:	Rabbit
Isotype:	IgG
Clonality:	Polyclonal
Immunogen:	The immunogen for anti-INTU antibody is: synthetic peptide directed towards the C-terminal region of Human INTU. Synthetic peptide located within the following region: TLEEVAQLSGSIHPQLIKNFHQCLSIRAVFQQTLVEEKKKGLNSGDHSD
Formulation:	Liquid. Purified antibody supplied in 1x PBS buffer with 0.09% (w/v) sodium azide and 2% sucrose.
Purification:	Affinity Purified
Conjugation:	Unconjugated
Storage:	Store at -20°C as received.
Stability:	Stable for 12 months from date of receipt.
Predicted Protein Size:	104 kDa
Gene Name:	inturned planar cell polarity protein
Database Link:	NP_056508 Entrez Gene 27152 Human Q9ULD6
Background:	INTU plays a key role in ciliogenesis and embryonic development. INTU is a regulator of cilia formation by controlling the organization of the apical actin cytoskeleton and the positioning of the basal bodies at the apical cell surface, which in turn is essential for the normal orientation of elongating ciliary microtubules. It plays a key role in definition of cell polarity via its role in ciliogenesis but not via conversion extension and has an indirect effect on hedgehog signaling.
Synonyms:	INT; PDZD6; PDZK6



[View online »](#)

Note: Immunogen Sequence Homology: Human: 100%; Dog: 79%

Product images:



WB Suggested Anti-INTU Antibody; Titration: 1.0 ug/ml; Positive Control: Fetal Brain