

Product datasheet for **TA334311**

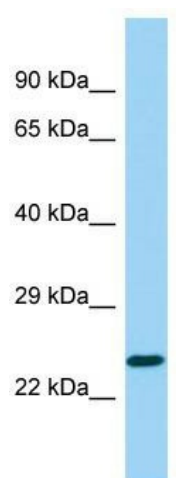
IGFBPL1 Rabbit Polyclonal Antibody

Product data:

Product Type:	Primary Antibodies
Applications:	WB
Recommended Dilution:	WB
Reactivity:	Human
Host:	Rabbit
Isotype:	IgG
Clonality:	Polyclonal
Immunogen:	The immunogen for anti-IGFBPL1 antibody is: synthetic peptide directed towards the C-terminal region of Human IGFBPL1. Synthetic peptide located within the following region: WRKVTKSPEGTQALEELPGDHNIAVQVRGGPSDHEATAWILINPLRKED
Formulation:	Liquid. Purified antibody supplied in 1x PBS buffer with 0.09% (w/v) sodium azide and 2% sucrose. <i>Note that this product is shipped as lyophilized powder to China customers.</i>
Purification:	Affinity Purified
Conjugation:	Unconjugated
Storage:	Store at -20°C as received.
Stability:	Stable for 12 months from date of receipt.
Predicted Protein Size:	26 kDa
Gene Name:	insulin like growth factor binding protein-like 1
Database Link:	NP_001007564 Entrez Gene 347252 Human Q8WX77
Background:	IGF-binding proteins prolong the half-life of IGFs and have been shown to either inhibit or stimulate the growth promoting effects of the IGFs in cell culture. They alter the interaction of IGFs with their cell surface receptors. IGFBPL1 may be a putative tumor suppressor protein.
Synonyms:	bA113O24.1; IGFBP-RP4; IGFBPRP4
Note:	Immunogen Sequence Homology: Human: 100%; Pig: 86%; Horse: 86%; Dog: 79%; Bovine: 79%; Rabbit: 79%



[View online »](#)

Product images:

Host: Rabbit; Target Name: IGFBPL1; Sample
Tissue: Fetal Liver lysates; Antibody Dilution: 1.0
ug/ml