

Product datasheet for **TA334310**

2 Hydroxy phytanoyl CoA lyase (HACL1) Rabbit Polyclonal Antibody

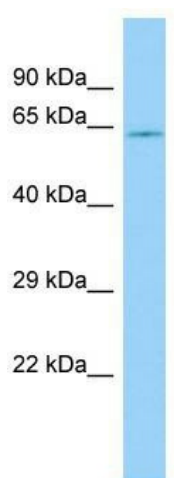
Product data:

Product Type:	Primary Antibodies
Applications:	WB
Recommended Dilution:	WB
Reactivity:	Human
Host:	Rabbit
Isotype:	IgG
Clonality:	Polyclonal
Immunogen:	The immunogen for anti-HACL1 antibody is: synthetic peptide directed towards the N-terminal region of Human HACL1. Synthetic peptide located within the following region: CWPLLVIGGSSERNQETMGAFQEFQVEACRLYTKFSARPSSIEAIPFVI
Formulation:	Liquid. Purified antibody supplied in 1x PBS buffer with 0.09% (w/v) sodium azide and 2% sucrose. <i>Note that this product is shipped as lyophilized powder to China customers.</i>
Purification:	Affinity Purified
Conjugation:	Unconjugated
Storage:	Store at -20°C as received.
Stability:	Stable for 12 months from date of receipt.
Predicted Protein Size:	64 kDa
Gene Name:	2-hydroxyacyl-CoA lyase 1
Database Link:	NP_036392 Entrez Gene 26061 Human Q9UJ83
Background:	HACL1 catalyzes a carbon-carbon cleavage reaction; It cleaves a 2-hydroxy-3-methylacyl-CoA into formyl-CoA and a 2-methyl-branched fatty aldehyde.
Synonyms:	2-HPCL; HPCL; HPCL2; PHYH2
Note:	Immunogen Sequence Homology: Pig: 100%; Rat: 100%; Human: 100%; Guinea pig: 100%; Dog: 93%; Mouse: 93%; Bovine: 93%; Rabbit: 93%; Horse: 86%; Zebrafish: 79%



[View online »](#)

Product images:



Host: Rabbit; Target Name: HACL1; Sample
Tissue: THP-1 Whole Cell lysates; Antibody
Dilution: 1.0 ug/ml