

Product datasheet for **TA334307**

G protein regulated inducer of neurite outgrowth 2 (GPRIN2) Rabbit Polyclonal Antibody

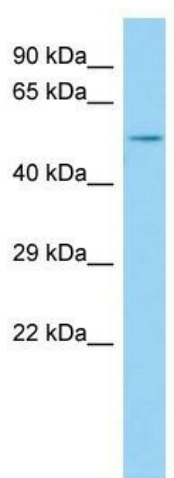
Product data:

Product Type:	Primary Antibodies
Applications:	WB
Recommended Dilution:	WB
Reactivity:	Human
Host:	Rabbit
Isotype:	IgG
Clonality:	Polyclonal
Immunogen:	The immunogen for anti-GPRIN2 antibody is: synthetic peptide directed towards the N-terminal region of Human GPRIN2. Synthetic peptide located within the following region: LSQSSSLLGEGREQRPELRKTASSTVWQAQLGEASTRPQAPEEEGNPPE
Formulation:	Liquid. Purified antibody supplied in 1x PBS buffer with 0.09% (w/v) sodium azide and 2% sucrose. <i>Note that this product is shipped as lyophilized powder to China customers.</i>
Purification:	Affinity Purified
Conjugation:	Unconjugated
Storage:	Store at -20°C as received.
Stability:	Stable for 12 months from date of receipt.
Predicted Protein Size:	51 kDa
Gene Name:	G protein regulated inducer of neurite outgrowth 2
Database Link:	NP_055511 Entrez Gene 9721 Human O60269
Background:	GPRIN2 may be involved in neurite outgrowth.
Synonyms:	GRIN2; KIAA0514
Note:	Immunogen Sequence Homology: Human: 100%; Yeast: 100%; Pig: 93%; Guinea pig: 93%; Rat: 92%
Protein Families:	Stem cell - Pluripotency



[View online »](#)

Product images:



Host: Rabbit; Target Name: GPRIN2; Sample Tissue: MDA-MB-435S Whole Cell lysates; Antibody Dilution: 1.0 ug/ml