

Product datasheet for **TA334306**

Gprc5d Rabbit Polyclonal Antibody

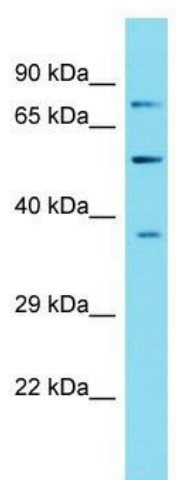
Product data:

Product Type:	Primary Antibodies
Applications:	WB
Recommended Dilution:	WB
Reactivity:	Mouse
Host:	Rabbit
Isotype:	IgG
Clonality:	Polyclonal
Immunogen:	The immunogen for anti-Gprc5d antibody is: synthetic peptide directed towards the C-terminal region of Mouse Gprc5d. Synthetic peptide located within the following region: MDTQEPTRRARDSGAQEDVALTAYGTPIQLQSADPSREYLIPSATLSPQQ
Formulation:	Liquid. Purified antibody supplied in 1x PBS buffer with 0.09% (w/v) sodium azide and 2% sucrose. <i>Note that this product is shipped as lyophilized powder to China customers.</i>
Purification:	Affinity Purified
Conjugation:	Unconjugated
Storage:	Store at -20°C as received.
Stability:	Stable for 12 months from date of receipt.
Predicted Protein Size:	37 kDa
Gene Name:	G protein-coupled receptor, family C, group 5, member D
Database Link:	NP_001192325 Entrez Gene 93746 Mouse Q9JIL6
Background:	The function of this protein remains unknown.
Synonyms:	MGC129713; MGC129714
Note:	Immunogen Sequence Homology: Dog: 100%; Pig: 100%; Rat: 100%; Horse: 100%; Human: 100%; Rabbit: 100%; Guinea pig: 100%; Mouse: 92%



[View online »](#)

Product images:



Host: Rabbit; Target Name: Gprc5d; Sample
Tissue: Mouse Thymus lysates; Antibody Dilution:
1.0 ug/ml