

Product datasheet for **TA334305**

GPR135 Rabbit Polyclonal Antibody

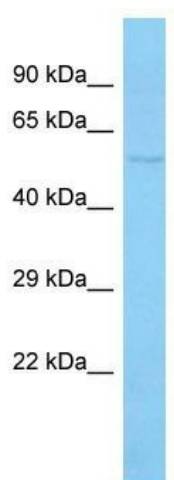
Product data:

Product Type:	Primary Antibodies
Applications:	WB
Recommended Dilution:	WB
Reactivity:	Human
Host:	Rabbit
Isotype:	IgG
Clonality:	Polyclonal
Immunogen:	The immunogen for anti-GPR135 antibody is: synthetic peptide directed towards the C-terminal region of Human GPR135. Synthetic peptide located within the following region: SSSNPASGVAGDVAMWARKNPVVLFCREGPPEPVTAVTKQPKSEAGDTSL
Formulation:	Liquid. Purified antibody supplied in 1x PBS buffer with 0.09% (w/v) sodium azide and 2% sucrose. <i>Note that this product is shipped as lyophilized powder to China customers.</i>
Purification:	Affinity Purified
Conjugation:	Unconjugated
Storage:	Store at -20°C as received.
Stability:	Stable for 12 months from date of receipt.
Predicted Protein Size:	54 kDa
Gene Name:	G protein-coupled receptor 135
Database Link:	NP_072093 Entrez Gene 64582 Human Q8IZ08
Background:	GPR135 is an orphan receptor.
Synonyms:	HUMNPIIY20
Note:	Immunogen Sequence Homology: Human: 100%
Protein Families:	Druggable Genome, GPCR, Transmembrane



[View online »](#)

Product images:



Host: Rabbit; Target Name: GPR135; Sample
Tissue: HT1080 Whole Cell lysates; Antibody
Dilution: 1.0ug/mL