

Product datasheet for **TA334303**

ARHGDIG Rabbit Polyclonal Antibody

Product data:

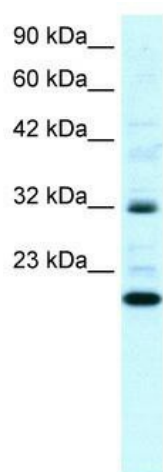
Product Type:	Primary Antibodies
Applications:	WB
Recommended Dilution:	WB
Reactivity:	Human
Host:	Rabbit
Isotype:	IgG
Clonality:	Polyclonal
Immunogen:	The immunogen for anti-ARHGDIG antibody: synthetic peptide directed towards the N terminal of human ARHGDIG. Synthetic peptide located within the following region: DEAVPEYRAPGRKSLLAIRQLDPDDRSLAKYKRVLLGPLPPAVDPSLPN
Formulation:	Liquid. Purified antibody supplied in 1x PBS buffer with 0.09% (w/v) sodium azide and 2% sucrose.
Purification:	Affinity Purified
Conjugation:	Unconjugated
Storage:	Store at -20°C as received.
Stability:	Stable for 12 months from date of receipt.
Predicted Protein Size:	25 kDa
Gene Name:	Rho GDP dissociation inhibitor gamma
Database Link:	NP_001167 Entrez Gene 398 Human Q99819
Background:	ARHGDIG is highly expressed in the entire brain, with regional variations. The mRNA is also present at high levels in kidney and pancreas and at moderate levels in spinal cord, stomach, and pituitary gland. ARHGDIG is mapped to chromosome band 16p13.3 which is rich in deletion mutants of genes involved in several human diseases, notably polycystic kidney disease, alpha-thalassemia, tuberous sclerosis, mental retardation, and cancer.
Synonyms:	RHOGDI-3
Note:	Immunogen Sequence Homology: Human: 100%; Horse: 77%



[View online »](#)

Protein Families: Druggable Genome

Product images:



WB Suggested Anti-ARHGDIG Antibody Titration:
0.2-1 ug/ml; Positive Control: Daudi cell lysate