

Product datasheet for **TA334302**

Pancreatic Lipase (PNLIP) Rabbit Polyclonal Antibody

Product data:

Product Type:	Primary Antibodies
Applications:	IHC, WB
Recommended Dilution:	WB, IHC
Reactivity:	Human
Host:	Rabbit
Isotype:	IgG
Clonality:	Polyclonal
Immunogen:	The immunogen for anti-PNLIP antibody: synthetic peptide directed towards the C terminal of human PNLIP. Synthetic peptide located within the following region: GHYADRYPGKTNVDVGQKFYLDTGDA SNFARWRYKVS VTL SGKKVTGHILV
Formulation:	Liquid. Purified antibody supplied in 1x PBS buffer with 0.09% (w/v) sodium azide and 2% sucrose. <i>Note that this product is shipped as lyophilized powder to China customers.</i>
Purification:	Protein A purified
Conjugation:	Unconjugated
Storage:	Store at -20°C as received.
Stability:	Stable for 12 months from date of receipt.
Predicted Protein Size:	51 kDa
Gene Name:	pancreatic lipase
Database Link:	NP_000927 Entrez Gene 5406 Human P16233
Background:	PNLIP is a member of the lipase gene family. PNLIP is a carboxyl esterase that hydrolyzes insoluble, emulsified triglycerides, and is essential for the efficient digestion of dietary fats. It is expressed specifically in the pancreas.
Synonyms:	PL; PNLIPD; PTL
Note:	Immunogen Sequence Homology: Human: 100%; Rabbit: 82%

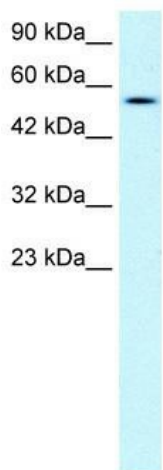


[View online »](#)

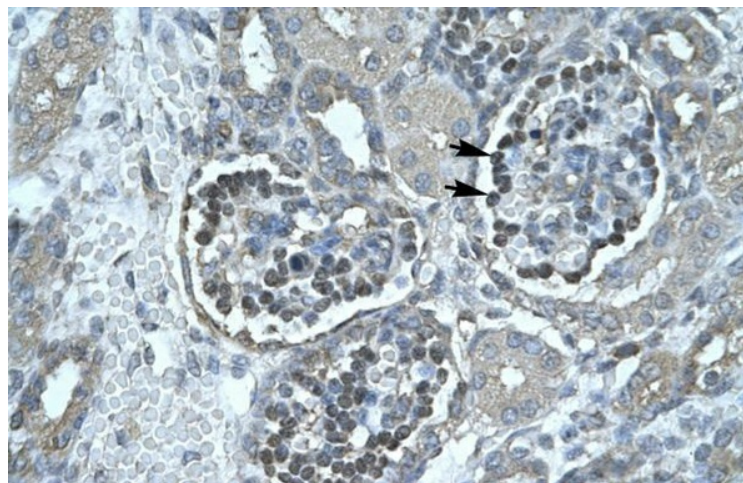
Protein Families: Druggable Genome, Secreted Protein

Protein Pathways: Glycerolipid metabolism, Metabolic pathways

Product images:



WB Suggested Anti-PNLIP Antibody Titration: 1.0 ug/ml; Positive Control: Jurkat cell lysate



Human kidney