

## Product datasheet for **TA334301**

### Pancreatic Lipase (PNLIP) Rabbit Polyclonal Antibody

#### Product data:

Product Type:	Primary Antibodies
Applications:	WB
Recommended Dilution:	WB
Reactivity:	Human
Host:	Rabbit
Isotype:	IgG
Clonality:	Polyclonal
Immunogen:	The immunogen for anti-PNLIP antibody: synthetic peptide directed towards the C terminal of human PNLIP. Synthetic peptide located within the following region: SGKKVTGHILVSLFGNKGNSKQYEIFKGTLPDSTHSNEFSDVDVGDQLQ
Formulation:	Liquid. Purified antibody supplied in 1x PBS buffer with 0.09% (w/v) sodium azide and 2% sucrose. <i>Note that this product is shipped as lyophilized powder to China customers.</i>
Purification:	Protein A purified
Conjugation:	Unconjugated
Storage:	Store at -20°C as received.
Stability:	Stable for 12 months from date of receipt.
Predicted Protein Size:	51 kDa
Gene Name:	pancreatic lipase
Database Link:	<a href="#">NP_000927</a> <a href="#">Entrez Gene 5406 Human</a> <a href="#">P16233</a>
Background:	PNLIP is a member of the lipase gene family. It encodes a carboxyl esterase that hydrolyzes insoluble, emulsified triglycerides, and is essential for the efficient digestion of dietary fats. This gene is expressed specifically in the pancreas.
Synonyms:	PL; PNLIPD; PTL
Note:	Immunogen Sequence Homology: Human: 100%; Bovine: 92%; Dog: 86%; Pig: 86%; Horse: 85%

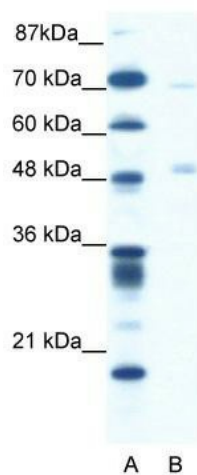


[View online »](#)

Protein Families: Druggable Genome, Secreted Protein

Protein Pathways: Glycerolipid metabolism, Metabolic pathways

### Product images:



WB Suggested Anti-PNLIP Antibody Titration: 1.25 ug/ml; Positive Control: Jurkat cell lysate