

Product datasheet for **TA334300**

Cholecystokinin (CCK) Rabbit Polyclonal Antibody

Product data:

Product Type:	Primary Antibodies
Applications:	WB
Recommended Dilution:	WB
Reactivity:	Human
Host:	Rabbit
Isotype:	IgG
Clonality:	Polyclonal
Immunogen:	The immunogen for anti-CCK antibody: synthetic peptide directed towards the middle region of human CCK. Synthetic peptide located within the following region: IQQARKAPSGRMSIVKLNQLDPSHRISDRDYMGMDFGRRSAEEYEYPS
Formulation:	Liquid. Purified antibody supplied in 1x PBS buffer with 0.09% (w/v) sodium azide and 2% sucrose. <i>Note that this product is shipped as lyophilized powder to China customers.</i>
Purification:	Affinity Purified
Conjugation:	Unconjugated
Storage:	Store at -20°C as received.
Stability:	Stable for 12 months from date of receipt.
Predicted Protein Size:	13 kDa
Gene Name:	cholecystokinin
Database Link:	NP_000720 Entrez Gene 885 Human P06307



[View online »](#)

Background:

Cholecystokinin (CCK) is a brain/gut peptide. In the gut, it induces the release of pancreatic enzymes and the contraction of the gallbladder. In the brain, its physiologic role is unclear. The cholecystokinin pro-hormone is processed by endo- and exo-proteolytic cleavages. Cholecystokinin is a brain/gut peptide. In the gut, it induces the release of pancreatic enzymes and the contraction of the gallbladder. In the brain, its physiologic role is unclear. The cholecystokinin pro-hormone is processed by endo- and exo-proteolytic cleavages. Publication Note: This RefSeq record includes a subset of the publications that are available for this gene. Please see the Entrez Gene record to access additional publications.

Synonyms:

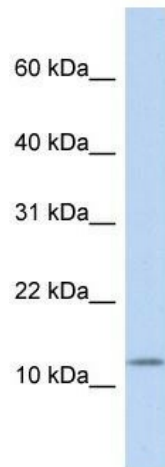
MGC117187

Note:

Immunogen Sequence Homology: Human: 100%; Dog: 93%; Horse: 93%; Rat: 92%; Mouse: 92%; Pig: 86%; Bovine: 86%; Rabbit: 86%; Guinea pig: 79%

Protein Families:

Druggable Genome, Secreted Protein

Product images:

WB Suggested Anti-CCK Antibody Titration: 0.2-1 ug/ml; ELISA Titer: 1:62500; Positive Control: Human brain