

Product datasheet for **TA334296**

EVI2A Rabbit Polyclonal Antibody

Product data:

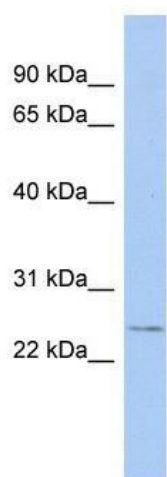
Product Type:	Primary Antibodies
Applications:	WB
Recommended Dilution:	WB
Reactivity:	Human
Host:	Rabbit
Isotype:	IgG
Clonality:	Polyclonal
Immunogen:	The immunogen for anti-EVI2A antibody: synthetic peptide directed towards the C terminal of human EVI2A. Synthetic peptide located within the following region: LSTVVLANKVSSLRRSKQVGKRQPRSNGLASGLWPAESDTWKRTKQLT
Formulation:	Liquid. Purified antibody supplied in 1x PBS buffer with 0.09% (w/v) sodium azide and 2% sucrose. <i>Note that this product is shipped as lyophilized powder to China customers.</i>
Purification:	Affinity Purified
Conjugation:	Unconjugated
Storage:	Store at -20°C as received.
Stability:	Stable for 12 months from date of receipt.
Predicted Protein Size:	26 kDa
Gene Name:	ecotropic viral integration site 2A
Database Link:	NP_055025 Entrez Gene 2123 Human P22794
Background:	EVI2A may complex with itself or/and other proteins within the membrane, to function as part of a cell-surface receptor.
Synonyms:	EVDA; EVI-2A; EVI2
Note:	Immunogen Sequence Homology: Dog: 100%; Pig: 100%; Rat: 100%; Horse: 100%; Human: 100%; Mouse: 100%; Bovine: 100%; Rabbit: 100%; Guinea pig: 93%



[View online »](#)

Protein Families: Druggable Genome, Transmembrane

Product images:



WB Suggested Anti-EVI2A Antibody Titration: 0.2-1 ug/ml; ELISA Titer: 1:62500; Positive Control: ACHN cell lysate. EVI2A is supported by BioGPS gene expression data to be expressed in ACHN