

## Product datasheet for **TA334293**

### CTRB1 Rabbit Polyclonal Antibody

#### Product data:

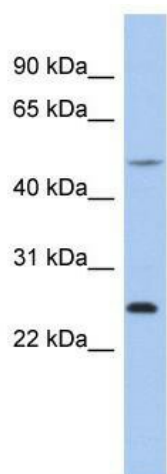
Product Type:	Primary Antibodies
Applications:	WB
Recommended Dilution:	WB
Reactivity:	Human
Host:	Rabbit
Isotype:	IgG
Clonality:	Polyclonal
Immunogen:	The immunogen for anti-CTRB1 antibody: synthetic peptide directed towards the N terminal of human CTRB1. Synthetic peptide located within the following region: MASLWLLSCFSLVGAAFGCGVPAIHPVLSGLSRIVNGEDAVPGSWPWQVS
Formulation:	Liquid. Purified antibody supplied in 1x PBS buffer with 0.09% (w/v) sodium azide and 2% sucrose. <i>Note that this product is shipped as lyophilized powder to China customers.</i>
Purification:	Affinity Purified
Conjugation:	Unconjugated
Storage:	Store at -20°C as received.
Stability:	Stable for 12 months from date of receipt.
Predicted Protein Size:	28 kDa
Gene Name:	chymotrypsinogen B1
Database Link:	<a href="#">NP_001897</a> <a href="#">Entrez Gene 1504 Human P17538</a>
Background:	The protein encoded by this gene is one of a family of serine proteases that is secreted into the gastrointestinal tract as an inactive precursor, which is activated by proteolytic cleavage with trypsin. [provided by RefSeq, Oct 2011]
Synonyms:	CTRB
Note:	Immunogen Sequence Homology: Human: 100%; Dog: 92%; Pig: 92%; Horse: 92%; Bovine: 92%; Mouse: 85%; Rabbit: 85%; Guinea pig: 85%; Rat: 83%



[View online »](#)

Protein Families: Druggable Genome, Protease, Secreted Protein, Transmembrane

### Product images:



WB Suggested Anti-CTRB1 Antibody Titration: 0.2-1 ug/ml; ELISA Titer: 1:312500; Positive Control: THP-1 cell lysate