

Product datasheet for **TA334292**

CTRB1 Rabbit Polyclonal Antibody

Product data:

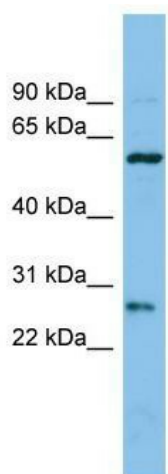
Product Type:	Primary Antibodies
Applications:	WB
Recommended Dilution:	WB
Reactivity:	Human
Host:	Rabbit
Isotype:	IgG
Clonality:	Polyclonal
Immunogen:	The immunogen for anti-CTRB1 antibody: synthetic peptide directed towards the middle region of human CTRB1. Synthetic peptide located within the following region: VTAAHCGVRTSDVWVAGEFDQGSDEENIQVLKIAKVFKNPKFSILTVNND
Formulation:	Liquid. Purified antibody supplied in 1x PBS buffer with 0.09% (w/v) sodium azide and 2% sucrose. <i>Note that this product is shipped as lyophilized powder to China customers.</i>
Purification:	Affinity Purified
Conjugation:	Unconjugated
Storage:	Store at -20°C as received.
Stability:	Stable for 12 months from date of receipt.
Predicted Protein Size:	28 kDa
Gene Name:	chymotrypsinogen B1
Database Link:	NP_001897 Entrez Gene 1504 Human P17538
Background:	Alpha-chymotrypsin (EC 3.4.21.1) is one of a family of serine proteases secreted into the gastrointestinal tract as the inactive precursor chymotrypsinogen. The zymogen is activated by proteolytic cleavage by trypsin.
Synonyms:	CTRB
Note:	Immunogen Sequence Homology: Human: 100%; Pig: 93%; Rat: 93%; Bovine: 93%; Dog: 86%; Mouse: 86%; Rabbit: 79%



[View online »](#)

Protein Families: Druggable Genome, Protease, Secreted Protein, Transmembrane

Product images:



WB Suggested Anti-CTRB1 Antibody Titration: 0.2-1 ug/ml; ELISA Titer: 1:62500; Positive Control: COLO205 cell lysate