

## Product datasheet for TA334291

### CD40L (CD40LG) Rabbit Polyclonal Antibody

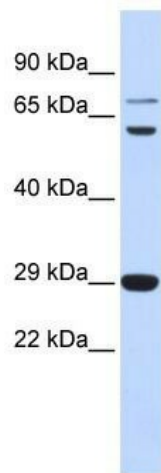
#### Product data:

Product Type:	Primary Antibodies
Applications:	WB
Recommended Dilution:	WB
Reactivity:	Human
Host:	Rabbit
Isotype:	IgG
Clonality:	Polyclonal
Immunogen:	The immunogen for anti-CD40LG antibody: synthetic peptide directed towards the middle region of human CD40LG. Synthetic peptide located within the following region: ENSFEMQKGDQNPQIAAHVISEASSKTTSVLQWAEKGYTMSNNLVTLEN
Formulation:	Liquid. Purified antibody supplied in 1x PBS buffer with 0.09% (w/v) sodium azide and 2% sucrose. <i>Note that this product is shipped as lyophilized powder to China customers.</i>
Purification:	Affinity Purified
Conjugation:	Unconjugated
Storage:	Store at -20°C as received.
Stability:	Stable for 12 months from date of receipt.
Predicted Protein Size:	29 kDa
Gene Name:	CD40 ligand
Database Link:	<a href="#">NP_000065</a> <a href="#">Entrez Gene 959 Human</a> <a href="#">P29965</a>



[View online »](#)

<b>Background:</b>	CD40LG is expressed on the surface of T cells. It regulates B cell function by engaging CD40 on the B cell surface. A defect in this gene results in an inability to undergo immunoglobulin class switch and is associated with hyper-IgM syndrome. The protein encoded by this gene is expressed on the surface of T cells. It regulates B cell function by engaging CD40 on the B cell surface. A defect in this gene results in an inability to undergo immunoglobulin class switch and is associated with hyper-IgM syndrome. Publication Note: This RefSeq record includes a subset of the publications that are available for this gene. Please see the Entrez Gene record to access additional publications. PRIMARYREFSEQ_SPAN PRIMARY_IDENTIFIER PRIMARY_SPAN COMP 1-1375 BC071754.1 1-1375 1376-1599 X67878.1 1349-1572 1600-1834 BC071754.1 1596-1830
<b>Synonyms:</b>	CD40L; CD154; gp39; hCD40L; HIGM1; IGM; IMD3; T-BAM; TNFSF5; TRAP
<b>Note:</b>	Immunogen Sequence Homology: Dog: 100%; Pig: 100%; Horse: 100%; Human: 100%; Sheep: 100%; Bovine: 100%; Rabbit: 92%; Rat: 85%; Mouse: 83%
<b>Protein Families:</b>	Druggable Genome, Secreted Protein, Transmembrane
<b>Protein Pathways:</b>	Allograft rejection, Asthma, Autoimmune thyroid disease, Cell adhesion molecules (CAMs), Cytokine-cytokine receptor interaction, Primary immunodeficiency, Systemic lupus erythematosus, T cell receptor signaling pathway, Viral myocarditis

**Product images:**

WB Suggested Anti-CD40LG Antibody Titration:  
0.2-1 ug/ml; ELISA Titer: 1:312500; Positive  
Control: Human Muscle