

Product datasheet for **TA334287**

Asialoglycoprotein Receptor 2 (ASGR2) Rabbit Polyclonal Antibody

Product data:

Product Type:	Primary Antibodies
Applications:	IHC, WB
Recommended Dilution:	WB, IHC
Reactivity:	Human
Host:	Rabbit
Isotype:	IgG
Clonality:	Polyclonal
Immunogen:	The immunogen for anti-ASGR2 antibody: synthetic peptide directed towards the N terminal of human ASGR2. Synthetic peptide located within the following region: LVMICVTGSQSEGHRGAQLQAELRSLKEAFSNFSSSTLTEVQAISTHGGSS
Formulation:	Liquid. Purified antibody supplied in 1x PBS buffer with 0.09% (w/v) sodium azide and 2% sucrose. <i>Note that this product is shipped as lyophilized powder to China customers.</i>
Purification:	Affinity Purified
Conjugation:	Unconjugated
Storage:	Store at -20°C as received.
Stability:	Stable for 12 months from date of receipt.
Predicted Protein Size:	35 kDa
Gene Name:	asialoglycoprotein receptor 2
Database Link:	NP_001172 Entrez Gene 433 Human P07307
Background:	ASGR2 binds to galactose-terminated glycoproteins. It transports these glycoproteins via a series of membrane vesicles and tubules to an acidic-sorting organelle where the receptor and ligand dissociates. Then the receptor is recycled back to the cell surface. There are four alternatively spliced transcript variants of this gene. This gene has multiple polyadenylation sites.
Synonyms:	ASGP-R2; ASGPR2; CLEC4H2; HBXBP; HL-2

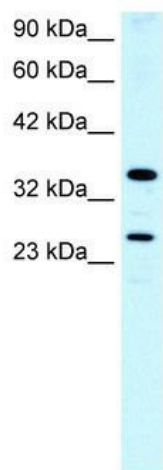


[View online »](#)

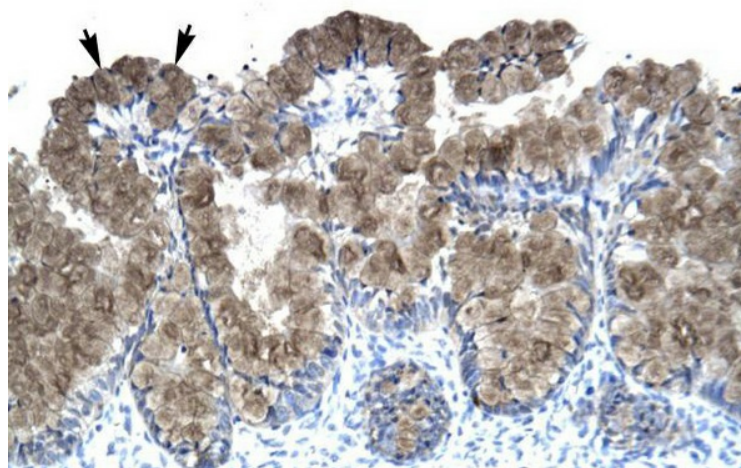
Note: Immunogen Sequence Homology: Human: 100%; Rat: 79%; Pig: 77%; Yeast: 77%

Protein Families: Druggable Genome, Transmembrane

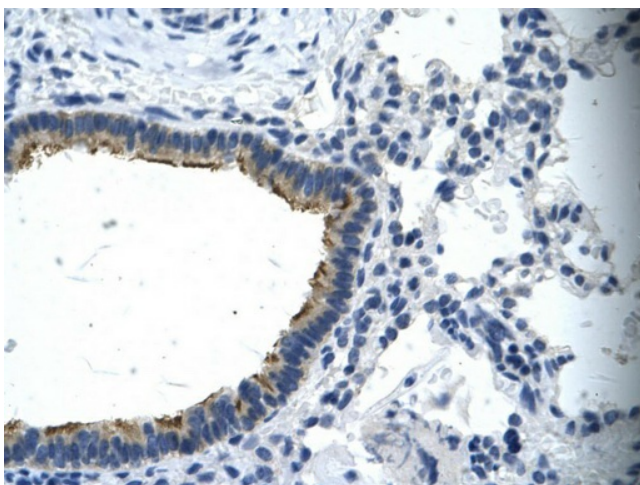
Product images:



WB Suggested Anti-ASGR2 Antibody Titration: 0.2-1 ug/ml; Positive Control: Human Lung



Human Intestine



Rabbit Anti-ANKRD12 Antibody; Paraffin Embedded Tissue: Human cilia; Cellular Data: Epithelial cells of renal tubule; Antibody Concentration: 4.0-8.0 ug/ml; Magnification: 400X