

## Product datasheet for **TA334286**

### Fetuin A (AHSG) Rabbit Polyclonal Antibody

#### Product data:

Product Type:	Primary Antibodies
Applications:	WB
Recommended Dilution:	WB
Reactivity:	Human
Host:	Rabbit
Isotype:	IgG
Clonality:	Polyclonal
Immunogen:	The immunogen for anti-AHSG antibody: synthetic peptide directed towards the N terminal of human AHSG. Synthetic peptide located within the following region: AQLWGCHSAPHGPGLIYRQPNCDDEPETEEAALVAIDYINQNLPGYKHTL
Formulation:	Liquid. Purified antibody supplied in 1x PBS buffer with 0.09% (w/v) sodium azide and 2% sucrose. <i>Note that this product is shipped as lyophilized powder to China customers.</i>
Purification:	Affinity Purified
Conjugation:	Unconjugated
Storage:	Store at -20°C as received.
Stability:	Stable for 12 months from date of receipt.
Predicted Protein Size:	39 kDa
Gene Name:	alpha 2-HS glycoprotein
Database Link:	<a href="#">NP_001613</a> <a href="#">Entrez Gene 197 Human</a> <a href="#">P02765</a>



[View online »](#)

**Background:**

Alpha2-HS glycoprotein (AHSG), a glycoprotein present in the serum, is synthesized by hepatocytes. The AHSG molecule consists of two polypeptide chains, which are both cleaved from a proprotein encoded from a single mRNA. It is involved in several functions, such as endocytosis, brain development and the formation of bone tissue. However, its exact significance is still obscure. Alpha2-HS glycoprotein (AHSG), a glycoprotein present in the serum, is synthesized by hepatocytes. The AHSG molecule consists of two polypeptide chains, which are both cleaved from a proprotein encoded from a single mRNA. It is involved in several functions, such as endocytosis, brain development and the formation of bone tissue. The protein is commonly present in the cortical plate of the immature cerebral cortex and bone marrow hemopoietic matrix, and it has therefore been postulated that it participates in the development of the tissues. However, its exact significance is still obscure. Alpha2-HS glycoprotein (AHSG), a glycoprotein present in the serum, is synthesized by hepatocytes. The AHSG molecule consists of two polypeptide chains, which are both cleaved from a proprotein encoded from a single mRNA. It is involved in several functions, such as endocytosis, brain development and the formation of bone tissue. The protein is commonly present in the cortical plate of the immature cerebral cortex and bone marrow hemopoietic matrix, and it has therefore been postulated that it participates in the development of the tissues. However, its exact significance is still obscure. Publication Note: This RefSeq record includes a subset of the publications that are available for this gene. Please see the Entrez Gene record to access additional publications.

**Synonyms:**

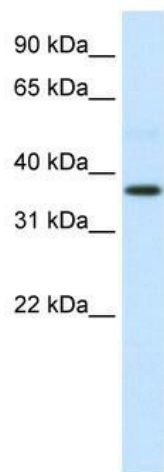
A2HS; AHS; FETUA; HSGA

**Note:**

Immunogen Sequence Homology: Rat: 100%; Human: 100%; Pig: 91%; Guinea pig: 91%; Dog: 86%; Horse: 79%

**Protein Families:**

Druggable Genome, Secreted Protein

**Product images:**


WB Suggested Anti-AHSG Antibody Titration: 0.2-1 ug/ml; ELISA Titer: 1:12500; Positive Control: Human Liver