

Product datasheet for **TA334285**

C4BPB Rabbit Polyclonal Antibody

Product data:

Product Type:	Primary Antibodies
Applications:	IHC, WB
Recommended Dilution:	WB, IHC
Reactivity:	Human
Host:	Rabbit
Isotype:	IgG
Clonality:	Polyclonal
Immunogen:	The immunogen for anti-C4BPB antibody: synthetic peptide directed towards the N terminal of human C4BPB. Synthetic peptide located within the following region: CCLMVAWRVSASDAEHCPPELPPVDNSIFVAKEVEGQILGTYVCIKGYHLV
Formulation:	Liquid. Purified antibody supplied in 1x PBS buffer with 0.09% (w/v) sodium azide and 2% sucrose. <i>Note that this product is shipped as lyophilized powder to China customers.</i>
Purification:	Affinity Purified
Conjugation:	Unconjugated
Storage:	Store at -20°C as received.
Stability:	Stable for 12 months from date of receipt.
Predicted Protein Size:	28 kDa
Gene Name:	complement component 4 binding protein beta
Database Link:	NP_000707 Entrez Gene 725 Human P20851



[View online »](#)

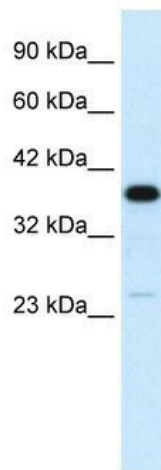
Background: C4BPB is a member of a superfamily of proteins composed predominantly of tandemly arrayed short consensus repeats of approximately 60 amino acids. A single, unique beta-chain encoded by this gene assembles with seven identical alpha-chains into the predominant isoform of C4b-binding protein, a multimeric protein that controls activation of the complement cascade through the classical pathway. C4b-binding protein has a regulatory role in the coagulation system also, mediated through the beta-chain binding of protein S, a vitamin K-dependent protein that serves as a cofactor of activated protein C.

Synonyms: C4BP

Note: Immunogen Sequence Homology: Human: 100%; Pig: 93%; Dog: 86%

Protein Pathways: Complement and coagulation cascades

Product images:



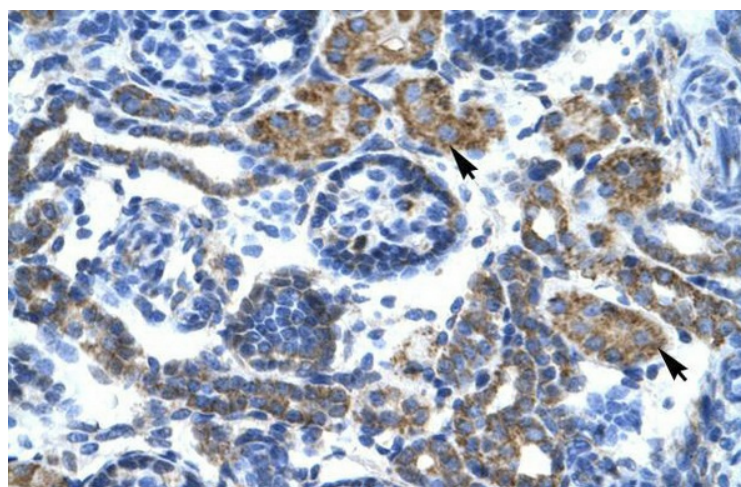
WB Suggested Anti-C4BPB Antibody Titration: 0.2-1 ug/ml; Positive Control: Human Liver

C4BPB



Rabbit Anti-C4BPB
 Sample Type: Human 721_B
 Antibody Concentration: 1ug/mL

Host: Rabbit; Target Name: C4BPB; Sample Tissue: 721_B; Antibody Dilution: 1.0 ug/ml; C4BPB is supported by BioGPS gene expression data to be expressed in 721_B



Human kidney