

## Product datasheet for **TA334283**

### A1BG Rabbit Polyclonal Antibody

#### Product data:

Product Type:	Primary Antibodies
Applications:	WB
Recommended Dilution:	WB
Reactivity:	Human
Host:	Rabbit
Isotype:	IgG
Clonality:	Polyclonal
Immunogen:	The immunogen for anti-A1BG antibody: synthetic peptide directed towards the N terminal of human A1BG. Synthetic peptide located within the following region: ITPGLKTTAVCRGVLRLGVTFLLRREGDHEFLEVPEAQEDVEATFPVHQPG
Formulation:	Liquid. Purified antibody supplied in 1x PBS buffer with 0.09% (w/v) sodium azide and 2% sucrose. <i>Note that this product is shipped as lyophilized powder to China customers.</i>
Purification:	Protein A purified
Conjugation:	Unconjugated
Storage:	Store at -20°C as received.
Stability:	Stable for 12 months from date of receipt.
Predicted Protein Size:	52 kDa
Gene Name:	alpha-1-B glycoprotein
Database Link:	<a href="#">NP_570602</a> <a href="#">Entrez Gene 1 Human</a> <a href="#">P04217</a>
Background:	A1BG is a plasma glycoprotein of unknown function. It shows sequence similarity to the variable regions of some immunoglobulin supergene family member proteins. The protein encoded by this gene is a plasma glycoprotein of unknown function. The protein shows sequence similarity to the variable regions of some immunoglobulin supergene family member proteins. PRIMARYREFSEQ_SPAN PRIMARY_IDENTIFIER PRIMARY_SPAN COMP 1-7 BX325198.2 1-7 8-1722 AB073611.1 1-1715 1723-1766 AK056201.1 462-505



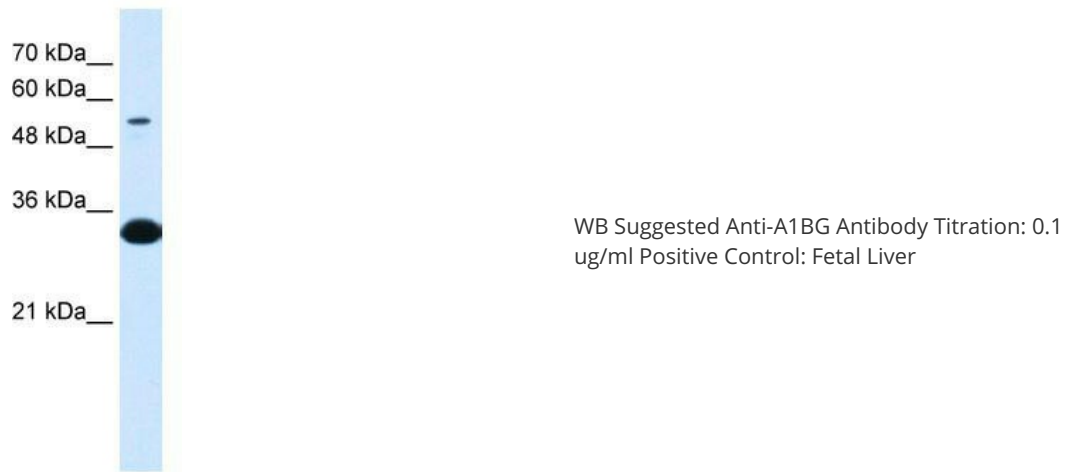
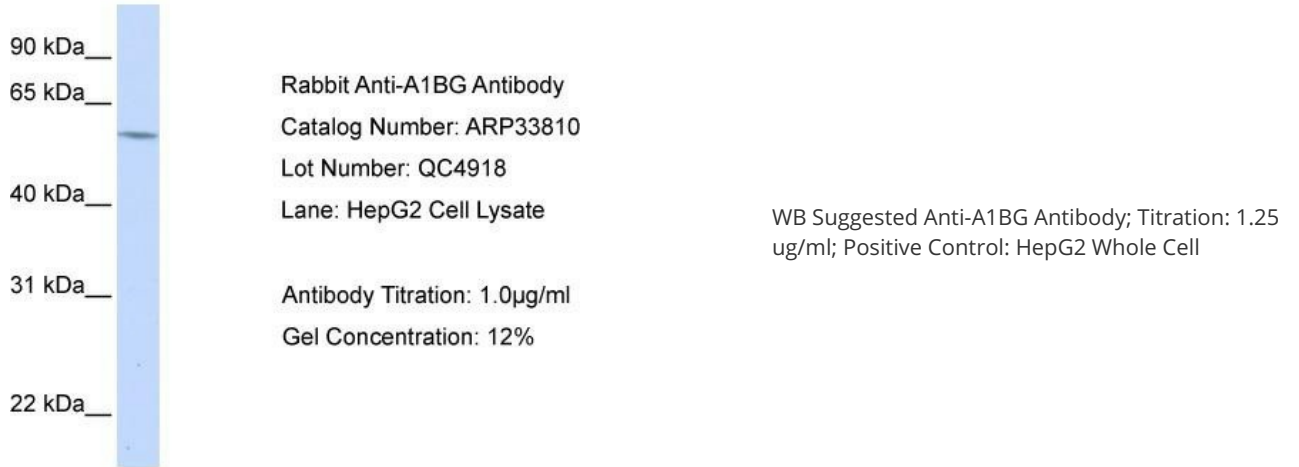
[View online »](#)

**Synonyms:** A1B; ABG; GAB; HYST2477

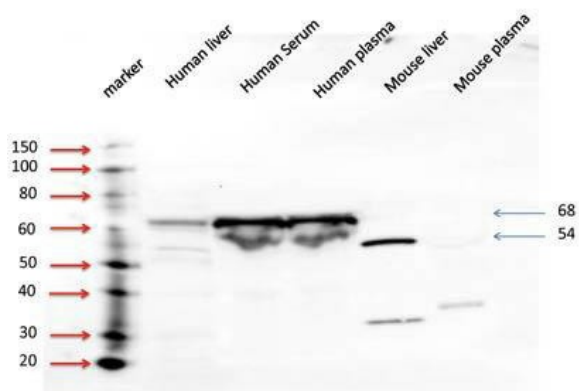
**Note:** Immunogen Sequence Homology: Human: 100%

**Protein Families:** Druggable Genome, ES Cell Differentiation/IPS, Secreted Protein

**Product images:**



# A1BG



WB Suggested Anti-A1BG Antibody; Titration: 5 ug/ml; Positive Control: human liver, human serum, human plasma