

Product datasheet for **TA334282**

XK Rabbit Polyclonal Antibody

Product data:

Product Type:	Primary Antibodies
Applications:	WB
Recommended Dilution:	WB
Reactivity:	Human
Host:	Rabbit
Isotype:	IgG
Clonality:	Polyclonal
Immunogen:	The immunogen for anti-XK antibody: synthetic peptide directed towards the N terminal of human XK. Synthetic peptide located within the following region: QMPKNGLSEIEKEVGQAEGKLITHRSAFSRASVIQAFLGSAPQLTLQLY
Formulation:	Liquid. Purified antibody supplied in 1x PBS buffer with 0.09% (w/v) sodium azide and 2% sucrose.
Purification:	Affinity Purified
Conjugation:	Unconjugated
Storage:	Store at -20°C as received.
Stability:	Stable for 12 months from date of receipt.
Predicted Protein Size:	51 kDa
Gene Name:	X-linked Kx blood group
Database Link:	NP_066569 Entrez Gene 7504 Human P51811

[View online »](#)

Background:

This locus controls the synthesis of the Kell blood group 'precursor substance' (Kx). Mutations in this gene have been associated with McLeod syndrome, an X-linked, recessive disorder characterized by abnormalities in the neuromuscular and hematopoietic systems. XK has structural characteristics of prokaryotic and eukaryotic membrane transport proteins. This locus controls the synthesis of the Kell blood group 'precursor substance' (Kx). Mutations in this gene have been associated with McLeod syndrome, an X-linked, recessive disorder characterized by abnormalities in the neuromuscular and hematopoietic systems. The encoded protein has structural characteristics of prokaryotic and eukaryotic membrane transport proteins. Publication Note: This RefSeq record includes a subset of the publications that are available for this gene. Please see the Entrez Gene record to access additional publications.

Synonyms:

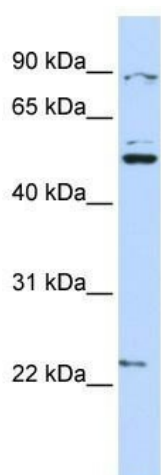
KX; NA; NAC; X1k; XKR1

Note:

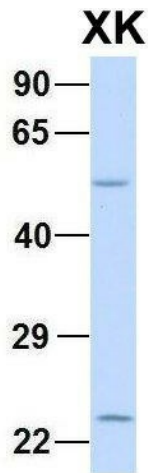
Immunogen Sequence Homology: Pig: 100%; Rat: 100%; Human: 100%; Rabbit: 100%; Dog: 92%; Bovine: 92%; Horse: 85%; Mouse: 85%; Guinea pig: 85%

Protein Families:

Transmembrane

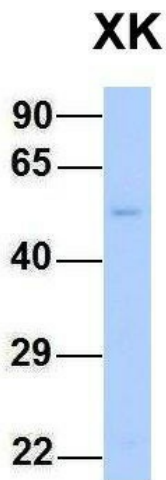
Product images:


WB Suggested Anti-XK Antibody Titration: 0.2-1 ug/ml; ELISA Titer: 1:62500; Positive Control: Hela cell lysate



Rabbit Anti-XK
Sample Type: Human Adult Placenta
Antibody Concentration: 1ug/mL

2Hum. Adult Placenta; Host: Rabbit; Target Name: CHAD; Sample Tissue: Human Adult Placenta; Antibody Dilution: 1.0 ug/ml



Rabbit Anti-XK
Sample Type: Human Fetal Liver
Antibody Concentration: 1ug/mL

Host: Rabbit; Target Name: XK; Sample Tissue: Human Fetal Liver; Antibody Dilution: 1.0 ug/ml