

Product datasheet for **TA334280**

SLC17A2 Rabbit Polyclonal Antibody

Product data:

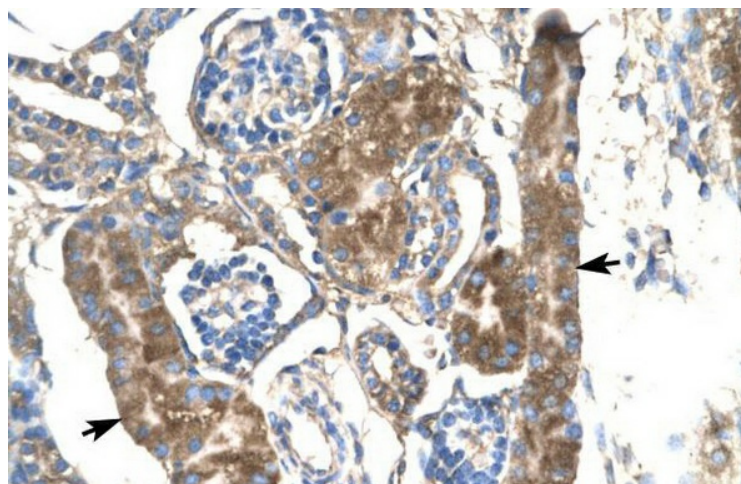
Product Type:	Primary Antibodies
Applications:	IHC, WB
Recommended Dilution:	WB, IHC
Reactivity:	Human
Host:	Rabbit
Isotype:	IgG
Clonality:	Polyclonal
Immunogen:	The immunogen for anti-SLC17A2 antibody: synthetic peptide directed towards the middle region of human SLC17A2. Synthetic peptide located within the following region: VIYDDPMHHPCISVREKEHILSSLAQPSGPRAVPIKAMVTCLPLWAIF
Formulation:	Liquid. Purified antibody supplied in 1x PBS buffer with 0.09% (w/v) sodium azide and 2% sucrose.
Purification:	Affinity Purified
Conjugation:	Unconjugated
Storage:	Store at -20°C as received.
Stability:	Stable for 12 months from date of receipt.
Predicted Protein Size:	48 kDa
Gene Name:	solute carrier family 17 member 2
Database Link:	NP_005826 Entrez Gene 10246 Human O00624
Background:	SLC17A2 is a member of the solute carrier family.
Synonyms:	NPT3
Note:	Immunogen Sequence Homology: Human: 100%; Rat: 92%; Pig: 91%; Guinea pig: 91%; Mouse: 85%; Bovine: 85%; Horse: 77%
Protein Families:	Transmembrane


[View online »](#)

Product images:



WB Suggested Anti-SLC17A2 Antibody Titration:
0.2-1 ug/ml; Positive Control: Jurkat cell lysate



Human kidney