

Product datasheet for **TA334278**

Asialoglycoprotein Receptor 1 (ASGR1) Rabbit Polyclonal Antibody

Product data:

Product Type:	Primary Antibodies
Applications:	WB
Recommended Dilution:	WB
Reactivity:	Human
Host:	Rabbit
Isotype:	IgG
Clonality:	Polyclonal
Immunogen:	The immunogen for Anti-ASGR1 antibody is: synthetic peptide directed towards the middle region of Human ASGR1. Synthetic peptide located within the following region: RKMKSLESQLEKQKDLSEDHSSLLLHVKQFVSDLRSLSCQMAALQGNGS
Formulation:	Liquid. Purified antibody supplied in 1x PBS buffer with 0.09% (w/v) sodium azide and 2% sucrose. <i>Note that this product is shipped as lyophilized powder to China customers.</i>
Purification:	Affinity Purified
Conjugation:	Unconjugated
Storage:	Store at -20°C as received.
Stability:	Stable for 12 months from date of receipt.
Predicted Protein Size:	33 kDa
Gene Name:	asialoglycoprotein receptor 1
Database Link:	NP_001662 Entrez Gene 432 Human P07306
Background:	ASGR1 is a cell surface receptor binds to galactose-terminated glycoproteins. It transports these glycoproteins via a series of membrane vesicles and tubules to an acidic-sorting organelle where the receptor and ligand dissociates. Then the receptor is recycled back to the cell surface.
Synonyms:	ASGPR; ASGPR1; CLEC4H1; HL-1

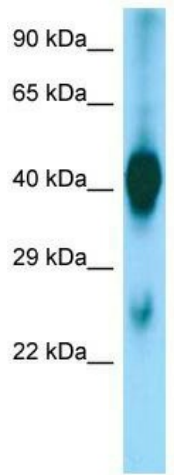


[View online »](#)

Note: Immunogen Sequence Homology: Human: 100%; Pig: 93%; Rat: 92%; Guinea pig: 92%; Mouse: 91%; Horse: 86%; Bovine: 85%; Yeast: 75%

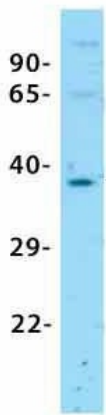
Protein Families: Druggable Genome, Transmembrane

Product images:



WB Suggested Anti-ASGR1 Antibody Titration: 0.2-1 ug/ml; ELISA Titer: 1:312500; Positive Control: Human Liver

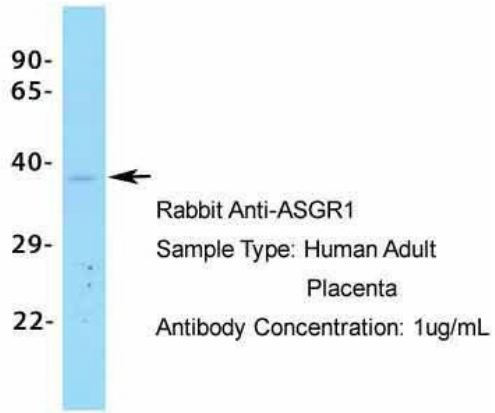
ASGR1



← Rabbit Anti-ASGR1
 Sample Type: 293T
 Antibody Concentration: 1ug/mL

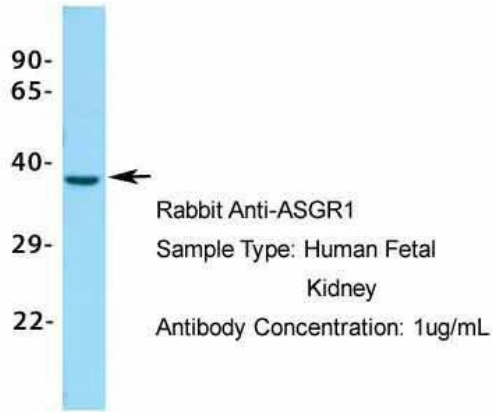
Host: Rabbit; Target Name: ASGR1; Sample Tissue: 293T; Antibody Dilution: 1.0 ug/ml

ASGR1



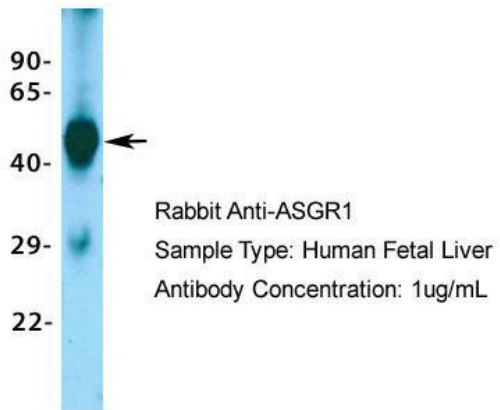
Host: Rabbit; Target Name: ASGR1; Sample Tissue: Human Adult Placenta; Antibody Dilution: 1.0 ug/ml

ASGR1



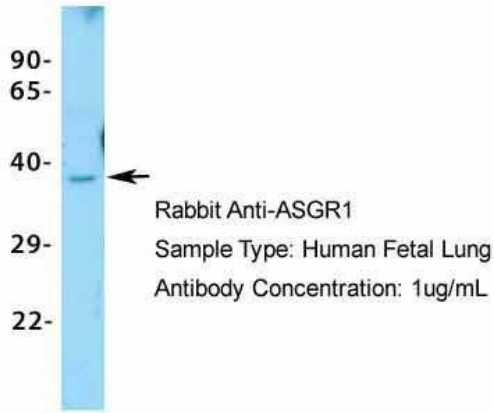
Host: Rabbit; Target Name: ASGR1; Sample Tissue: Human Fetal Kidney; Antibody Dilution: 1.0 ug/ml

ASGR1



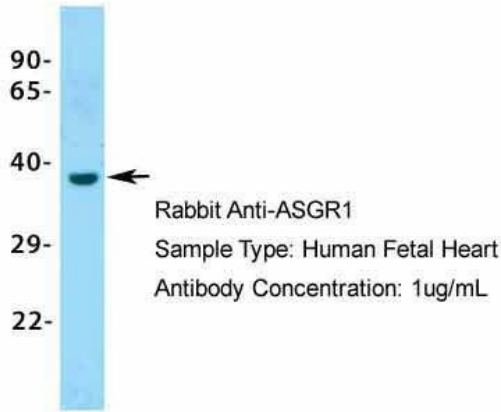
Host: Rabbit; Target Name: ASGR1; Sample Tissue: Human Fetal Liver; Antibody Dilution: 1.0 ug/ml

ASGR1



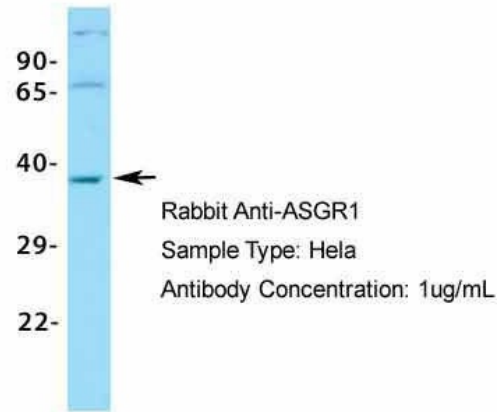
Host: Rabbit; Target Name: ASGR1; Sample Tissue: Human Fetal Lung; Antibody Dilution: 1.0 µg/ml

ASGR1



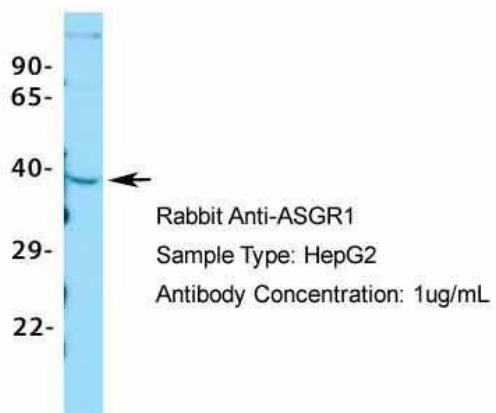
Host: Rabbit; Target Name: ASGR1; Sample Tissue: Human Fetal Heart; Antibody Dilution: 1.0 µg/ml

ASGR1



Host: Rabbit; Target Name: ASGR1; Sample Tissue: HeLa; Antibody Dilution: 1.0 µg/ml

ASGR1



Host: Rabbit; Target Name: ASGR1; Sample Tissue: HepG2; Antibody Dilution: 1.0 ug/ml; ASGR1 is supported by BioGPS gene expression data to be expressed in HepG2