

Product datasheet for **TA334277**

AFM Rabbit Polyclonal Antibody

Product data:

Product Type:	Primary Antibodies
Applications:	WB
Recommended Dilution:	WB
Reactivity:	Human
Host:	Rabbit
Isotype:	IgG
Clonality:	Polyclonal
Immunogen:	The immunogen for anti-AFM antibody: synthetic peptide directed towards the middle region of human AFM. Synthetic peptide located within the following region: GQCIINSNKDDRPKDLRLREGKFTDSENVQCERDADPDFFAKFTFEYSR
Formulation:	Liquid. Purified antibody supplied in 1x PBS buffer with 0.09% (w/v) sodium azide and 2% sucrose. <i>Note that this product is shipped as lyophilized powder to China customers.</i>
Purification:	Affinity Purified
Conjugation:	Unconjugated
Storage:	Store at -20°C as received.
Stability:	Stable for 12 months from date of receipt.
Predicted Protein Size:	69 kDa
Gene Name:	afamin
Database Link:	NP_001124 Entrez Gene 173 Human P43652



[View online »](#)

Background:

AFM is a member of the albumin gene family, which is comprised of four genes that localize to chromosome 4 in a tandem arrangement. These four genes encode structurally-related serum transport proteins that are known to be evolutionarily related. AFM is regulated developmentally, expressed in the liver and secreted into the bloodstream. This gene is a member of the albumin gene family, which is comprised of four genes that localize to chromosome 4 in a tandem arrangement. These four genes encode structurally-related serum transport proteins that are known to be evolutionarily related. The protein encoded by this gene is regulated developmentally, expressed in the liver and secreted into the bloodstream.

Synonyms:

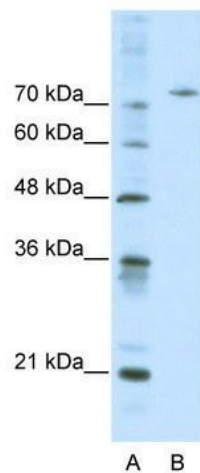
ALB2; ALBA; ALF

Note:

Immunogen Sequence Homology: Human: 100%; Pig: 79%; Guinea pig: 79%

Protein Families:

Druggable Genome, Secreted Protein

Product images:

WB Suggested Anti-AFM Antibody Titration: 0.2-1 ug/ml; Positive Control: HepG2 cell lysate