

## Product datasheet for **TA334276**

### AFM Rabbit Polyclonal Antibody

#### Product data:

Product Type:	Primary Antibodies
Applications:	WB
Recommended Dilution:	WB
Reactivity:	Human
Host:	Rabbit
Isotype:	IgG
Clonality:	Polyclonal
Immunogen:	The immunogen for anti-AFM antibody: synthetic peptide directed towards the C terminal of human AFM. Synthetic peptide located within the following region: HADMCQSQNEELQRKTDRFLVNLVCLKHELTDEELQSLFTNFANVVDKCC
Formulation:	Liquid. Purified antibody supplied in 1x PBS buffer with 0.09% (w/v) sodium azide and 2% sucrose. <i>Note that this product is shipped as lyophilized powder to China customers.</i>
Purification:	Affinity Purified
Conjugation:	Unconjugated
Storage:	Store at -20°C as received.
Stability:	Stable for 12 months from date of receipt.
Predicted Protein Size:	67 kDa
Gene Name:	afamin
Database Link:	<a href="#">NP_001124</a> <a href="#">Entrez Gene 173 Human</a> <a href="#">P43652</a>
Background:	AFM is a member of the albumin gene family, which is comprised of four genes that localize to chromosome 4 in a tandem arrangement. These four genes encode structurally-related serum transport proteins that are known to be evolutionarily related. AFM is regulated developmentally, expressed in the liver and secreted into the bloodstream.
Synonyms:	ALB2; ALBA; ALF

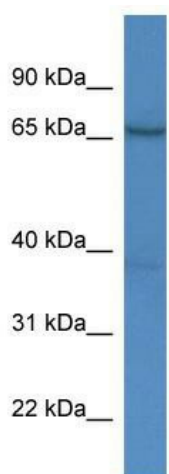


[View online »](#)

**Note:** Immunogen Sequence Homology: Human: 100%; Pig: 92%; Horse: 92%; Bovine: 92%; Rabbit: 92%; Dog: 91%

**Protein Families:** Druggable Genome, Secreted Protein

**Product images:**



WB Suggested Anti-AFM Antibody Titration: 0.2-1 ug/ml; ELISA Titer: 1:12500; Positive Control: HepG2 cell lysate