

Product datasheet for **TA334273**

ATP7A Rabbit Polyclonal Antibody

Product data:

Product Type:	Primary Antibodies
Applications:	WB
Recommended Dilution:	WB
Reactivity:	Mouse, Human
Host:	Rabbit
Isotype:	IgG
Clonality:	Polyclonal
Immunogen:	The immunogen for anti-ATP7A antibody: synthetic peptide directed towards the middle region of human ATP7A. Synthetic peptide located within the following region: SSLFLKLYRKPTYESYELPARSQIGQKSPSEISVHVGIDDSRNSPKLGL
Formulation:	Liquid. Purified antibody supplied in 1x PBS buffer with 0.09% (w/v) sodium azide and 2% sucrose. <i>Note that this product is shipped as lyophilized powder to China customers.</i>
Purification:	Affinity Purified
Conjugation:	Unconjugated
Storage:	Store at -20°C as received.
Stability:	Stable for 12 months from date of receipt.
Predicted Protein Size:	163 kDa
Gene Name:	ATPase copper transporting alpha
Database Link:	NP_000043 Entrez Gene 11977 Mouse Entrez Gene 538 Human Q04656



[View online »](#)

Background:

This gene encodes a transmembrane protein that functions in copper transport across membranes. This protein is localized to the trans Golgi network, where it is predicted to supply copper to copper-dependent enzymes in the secretory pathway. It relocalizes to the plasma membrane under conditions of elevated extracellular copper, and functions in the efflux of copper from cells. Mutations in this gene are associated with Menkes disease, X-linked distal spinal muscular atrophy, and occipital horn syndrome. Alternatively-spliced transcript variants have been observed. [provided by RefSeq, Aug 2013]

Synonyms:

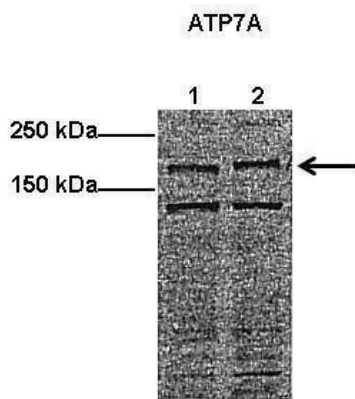
DSMAX; MK; MNK; SMAX3

Note:

Immunogen Sequence Homology: Dog: 100%; Pig: 100%; Rat: 100%; Horse: 100%; Human: 100%; Mouse: 100%; Bovine: 100%; Rabbit: 100%; Guinea pig: 100%

Protein Families:

Druggable Genome, Transmembrane

Product images:


Lanes: ; Lane 1: 40 ug mouse endothelial fibroblast lysate; Lane 2: 40 ug human HUVEC lysate; Primary Antibody Dilution: ; 1:500; Secondary Antibody: ; Anti-rabbit HRP; Secondary Antibody Dilution: ; 1:2000; Gene Name: ; ATP7A; Submitted by: ; Anonymous;

See Immunoblot 2 Data and Customer Feedback for more information



WB Suggested Anti-ATP7A Antibody Titration: 0.2-1 ug/ml; ELISA Titer: 1:312500; Positive Control: HT1080 cell lysate ATP7A is supported by BioGPS gene expression data to be expressed in HT1080