

Product datasheet for **TA334270**

PARP6 Rabbit Polyclonal Antibody

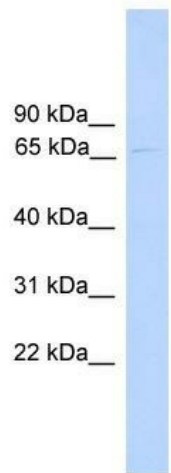
Product data:

Product Type:	Primary Antibodies
Applications:	WB
Recommended Dilution:	WB
Reactivity:	Human
Host:	Rabbit
Isotype:	IgG
Clonality:	Polyclonal
Immunogen:	The immunogen for anti-PARP6 antibody: synthetic peptide directed towards the N terminal of human PARP6. Synthetic peptide located within the following region: MDIKGQFWNDDDDSEGDNESEEFYGVQGSAAADLYRHPQLDADIEAVKEI
Formulation:	Liquid. Purified antibody supplied in 1x PBS buffer with 0.09% (w/v) sodium azide and 2% sucrose.
Purification:	Affinity Purified
Conjugation:	Unconjugated
Storage:	Store at -20°C as received.
Stability:	Stable for 12 months from date of receipt.
Predicted Protein Size:	71 kDa
Gene Name:	poly(ADP-ribose) polymerase family member 6
Database Link:	NP_064599 Entrez Gene 56965 Human Q2NL67
Background:	Poly(ADP-ribose) polymerases (PARPs) constitute a large family of 18 proteins, encoded by different genes and displaying a conserved catalytic domain. They are involved in DNA-damage-dependent post-translational modification of histones and other nuclear proteins that contributes to the survival of injured proliferating cells.
Synonyms:	ARTD17; PARP-6-B1; PARP-6-C; pART17
Note:	Immunogen Sequence Homology: Dog: 100%; Pig: 100%; Rat: 100%; Horse: 100%; Human: 100%; Mouse: 100%; Bovine: 100%; Rabbit: 100%; Zebrafish: 100%; Guinea pig: 100%



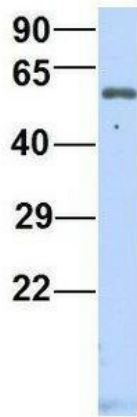
[View online »](#)

Product images:



WB Suggested Anti-PARP6 Antibody Titration: 0.2-1 ug/ml; ELISA Titer: 1:12500; Positive Control: 721_B cell lysate

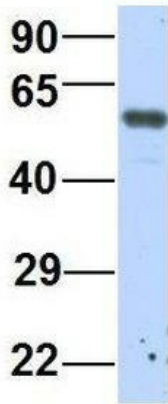
PARP6



Rabbit Anti-PARP6
Sample Type: Human Fetal Heart
Antibody Concentration: 1ug/mL

Host: Rabbit; Target Name: PARP6; Sample Tissue: Human Fetal Heart; Antibody Dilution: 1.0 ug/ml

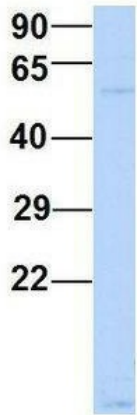
PARP6



Rabbit Anti-PARP6
Sample Type: Human Fetal Lung
Antibody Concentration: 1ug/mL

Host: Rabbit; Target Name: PARP6; Sample
Tissue: Human Fetal Lung; Antibody Dilution: 1.0
ug/ml

PARP6



Rabbit Anti-PARP6
Sample Type: Human MCF7
Antibody Concentration: 1ug/mL

Host: Rabbit; Target Name: PARP6; Sample
Tissue: Human MCF7; Antibody Dilution: 1.0
ug/ml; PARP6 is supported by BioGPS gene
expression data to be expressed in MCF7