

Product datasheet for **TA334269**

PARP9 Rabbit Polyclonal Antibody

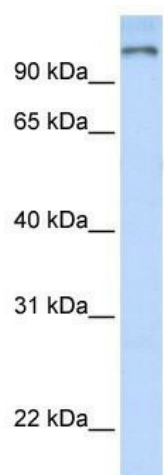
Product data:

Product Type:	Primary Antibodies
Applications:	WB
Recommended Dilution:	WB
Reactivity:	Human
Host:	Rabbit
Isotype:	IgG
Clonality:	Polyclonal
Immunogen:	The immunogen for anti-PARP9 antibody: synthetic peptide directed towards the N terminal of human PARP9. Synthetic peptide located within the following region: LHGGGLALALVKAGGFIEESKQFVARYGKVSAGEIAVTGAGRLPCKQI
Formulation:	Liquid. Purified antibody supplied in 1x PBS buffer with 0.09% (w/v) sodium azide and 2% sucrose. <i>Note that this product is shipped as lyophilized powder to China customers.</i>
Purification:	Affinity Purified
Conjugation:	Unconjugated
Storage:	Store at -20°C as received.
Stability:	Stable for 12 months from date of receipt.
Predicted Protein Size:	96 kDa
Gene Name:	poly(ADP-ribose) polymerase family member 9
Database Link:	NP_113646 Entrez Gene 83666 Human Q8IXQ6
Background:	PARP9 contains 2 Macro domains and 1 PARP catalytic domain. PARP9 is overexpressed at significantly higher levels in fatal high-risk diffuse large B-cell lymphomas (DLB-CL) compared to cured low-risk tumors. Overexpression of PARP9 in B-cell lymphoma transfectants may promote malignant B-cell migration. The function of PARP9 remains unknown.
Synonyms:	ARTD9; BAL; BAL1; MGC:7868
Note:	Immunogen Sequence Homology: Human: 100%



[View online »](#)

Product images:



WB Suggested Anti-PARP9 Antibody Titration: 0.2-1 ug/ml; ELISA Titer: 1:62500; Positive Control: Human brain