

Product datasheet for **TA334268**

PARP11 Rabbit Polyclonal Antibody

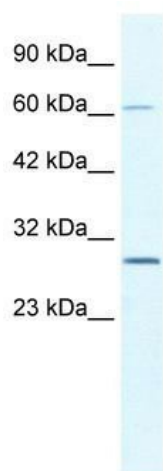
Product data:

Product Type:	Primary Antibodies
Applications:	WB
Recommended Dilution:	WB
Reactivity:	Human
Host:	Rabbit
Isotype:	IgG
Clonality:	Polyclonal
Immunogen:	The immunogen for anti-PARP11 antibody: synthetic peptide directed towards the N terminal of human PARP11. Synthetic peptide located within the following region: SAFSYICENEAIMPPHWENVNTQVPYQLIPLHNQTHEYNEVANLFGKTM
Formulation:	Liquid. Purified antibody supplied in 1x PBS buffer with 0.09% (w/v) sodium azide and 2% sucrose.
Purification:	Protein A purified
Conjugation:	Unconjugated
Storage:	Store at -20°C as received.
Stability:	Stable for 12 months from date of receipt.
Predicted Protein Size:	39 kDa
Gene Name:	poly(ADP-ribose) polymerase family member 11
Database Link:	NP_065100 Entrez Gene 57097 Human Q9NR21
Synonyms:	ARTD11; C12orf6; MIB006
Note:	Immunogen Sequence Homology: Dog: 100%; Pig: 100%; Horse: 100%; Human: 100%; Bovine: 100%; Rabbit: 93%; Guinea pig: 93%; Mouse: 91%; Rat: 79%



[View online »](#)

Product images:



WB Suggested Anti-PARP11 Antibody; Titration:
2.5 ug/ml; Positive Control: HepG2 Whole Cell