

## Product datasheet for **TA334267**

### PARP11 Rabbit Polyclonal Antibody

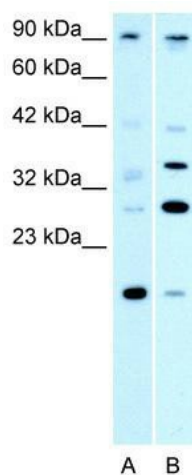
#### Product data:

Product Type:	Primary Antibodies
Applications:	WB
Recommended Dilution:	WB
Reactivity:	Human
Host:	Rabbit
Isotype:	IgG
Clonality:	Polyclonal
Immunogen:	The immunogen for anti-PARP11 antibody: synthetic peptide directed towards the N terminal of human PARP11. Synthetic peptide located within the following region: SAFSYICENEAI PMPPHWENVNTQVPYQLIPLHNQTHEYNEVANLFGKTM
Formulation:	Liquid. Purified antibody supplied in 1x PBS buffer with 0.09% (w/v) sodium azide and 2% sucrose. <i>Note that this product is shipped as lyophilized powder to China customers.</i>
Purification:	Affinity Purified
Conjugation:	Unconjugated
Storage:	Store at -20°C as received.
Stability:	Stable for 12 months from date of receipt.
Predicted Protein Size:	39 kDa
Gene Name:	poly(ADP-ribose) polymerase family member 11
Database Link:	<a href="#">NP_065100</a> <a href="#">Entrez Gene 57097 Human</a> <a href="#">Q9NR21</a>
Background:	The PARP11 gene is part of the poly (ADP-ribose) polymerase family.
Synonyms:	ARTD11; C12orf6; MIB006
Note:	Immunogen Sequence Homology: Dog: 100%; Pig: 100%; Horse: 100%; Human: 100%; Bovine: 100%; Rabbit: 93%; Guinea pig: 93%; Mouse: 91%; Rat: 79%



[View online »](#)

## Product images:



WB Suggested Anti-PARP11 Antibody Titration:  
0.2-1 ug/ml; ELISA Titer: 1:312500; Positive  
Control: HepG2 cell lysate KIF3B is supported by  
BioGPS gene expression data to be expressed in  
HepG2