

## Product datasheet for **TA334264**

### PARP7 (TIPARP) Rabbit Polyclonal Antibody

#### Product data:

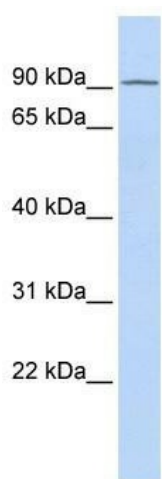
Product Type:	Primary Antibodies
Applications:	WB
Recommended Dilution:	WB
Reactivity:	Human
Host:	Rabbit
Isotype:	IgG
Clonality:	Polyclonal
Immunogen:	The immunogen for anti-TIPARP antibody: synthetic peptide directed towards the N terminal of human TIPARP. Synthetic peptide located within the following region: LKTCFKKKDQKRLGTGTLRSLRPILNTLLESGSLDGVFRSRNQSTDENSL
Formulation:	Liquid. Purified antibody supplied in 1x PBS buffer with 0.09% (w/v) sodium azide and 2% sucrose. <i>Note that this product is shipped as lyophilized powder to China customers.</i>
Purification:	Affinity Purified
Conjugation:	Unconjugated
Storage:	Store at -20°C as received.
Stability:	Stable for 12 months from date of receipt.
Predicted Protein Size:	76 kDa
Gene Name:	TCDD inducible poly(ADP-ribose) polymerase
Database Link:	<a href="#">NP_056323</a> <a href="#">Entrez Gene 25976 Human Q7Z3E1</a>
Background:	TIPARP is a poly [ADP-ribose] polymerase using NAD <sup>+</sup> as a substrate to transfer ADP-ribose onto glutamic acid residues of a protein acceptor; repeated rounds of ADP-ribosylation leads to the formation of poly(ADPribose) chains on the protein, thereby altering the function of the target protein. TIPARP may play a role in the adaptative response to chemical exposure (TCDD) and thereby mediates certain effects of the chemicals.
Synonyms:	ARTD14; PARP7; pART14



[View online »](#)

**Note:** Immunogen Sequence Homology: Dog: 100%; Pig: 100%; Horse: 100%; Human: 100%; Bovine: 100%; Rabbit: 92%; Rat: 83%; Mouse: 83%

### Product images:



WB Suggested Anti-TIPARP Antibody Titration:  
0.2-1 ug/ml; ELISA Titer: 1:312500; Positive  
Control: Human heart