

Product datasheet for **TA334263**

PARP3 Rabbit Polyclonal Antibody

Product data:

Product Type:	Primary Antibodies
Applications:	IHC, WB
Recommended Dilution:	WB, IHC
Reactivity:	Human
Host:	Rabbit
Isotype:	IgG
Clonality:	Polyclonal
Immunogen:	The immunogen for anti-PARP3 antibody: synthetic peptide directed towards the C terminal of human PARP3. Synthetic peptide located within the following region: LGREHHINTDNPSLKSPPPGFDSVIARGHTEPDPTQDTELELDGQQVWP
Formulation:	Liquid. Purified antibody supplied in 1x PBS buffer with 0.09% (w/v) sodium azide and 2% sucrose. <i>Note that this product is shipped as lyophilized powder to China customers.</i>
Purification:	Affinity Purified
Conjugation:	Unconjugated
Storage:	Store at -20°C as received.
Stability:	Stable for 12 months from date of receipt.
Predicted Protein Size:	59 kDa
Gene Name:	poly(ADP-ribose) polymerase family member 3
Database Link:	NP_005476 Entrez Gene 10039 Human Q9Y6F1
Background:	PARP3 belongs to the PARP family. These enzymes modify nuclear proteins by poly-ADP-ribosylation, which is required for DNA repair, regulation of apoptosis, and maintenance of genomic stability. PARP3 is preferentially localized to the daughter centriole throughout the cell cycle. Alternatively spliced transcript variants encoding different isoforms have been identified.
Synonyms:	ADPRT3; ADPRTL2; ADPRTL3; ARTD3; IRT1; PADPRT-3



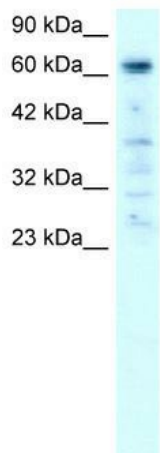
[View online »](#)

Note: Immunogen Sequence Homology: Horse: 100%; Human: 100%; Rabbit: 100%; Rat: 92%; Bovine: 92%; Dog: 91%; Pig: 85%; Mouse: 77%

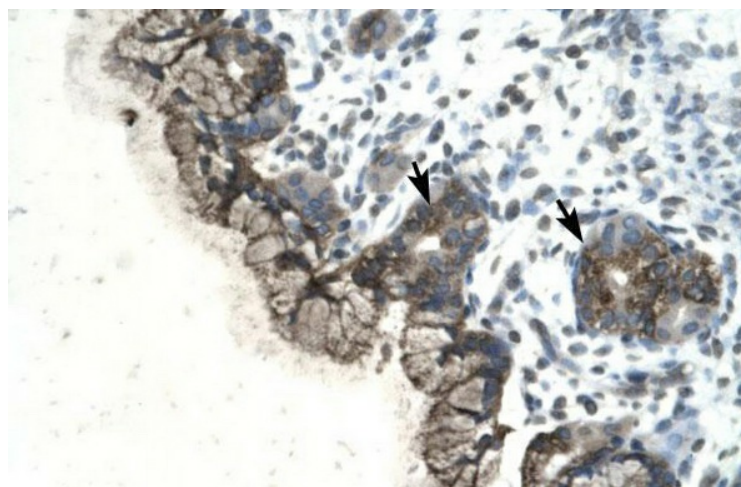
Protein Families: Druggable Genome

Protein Pathways: Base excision repair

Product images:



WB Suggested Anti-PARP3 Antibody Titration: 0.2-1 ug/ml; Positive Control: HepG2 cell lysate



Human Stomach