

Product datasheet for **TA334262**

PARP2 Rabbit Polyclonal Antibody

Product data:

Product Type:	Primary Antibodies
Applications:	IF, WB
Recommended Dilution:	IF, WB
Reactivity:	Rat
Host:	Rabbit
Isotype:	IgG
Clonality:	Polyclonal
Immunogen:	The immunogen for anti-PARP2 antibody: synthetic peptide directed towards the middle region of human PARP2. Synthetic peptide located within the following region: LLDLFEVEKDGKEAFREDLHNRMLLWHGSRMSNWVGILSHGLRIAHPEA
Formulation:	Liquid. Purified antibody supplied in 1x PBS buffer with 0.09% (w/v) sodium azide and 2% sucrose. <i>Note that this product is shipped as lyophilized powder to China customers.</i>
Purification:	Affinity Purified
Conjugation:	Unconjugated
Storage:	Store at -20°C as received.
Stability:	Stable for 12 months from date of receipt.
Predicted Protein Size:	61 kDa
Gene Name:	poly(ADP-ribose) polymerase 2
Database Link:	NP_005475 Entrez Gene 290027 Rat Q9UGN5
Background:	PARP2 contains a catalytic domain and is capable of catalyzing a poly(ADP-ribosylation) reaction. This protein has a catalytic domain which is homologous to that of poly (ADP-ribose) transferase, but lacks an N-terminal DNA binding domain which activates the C-terminal catalytic domain of poly (ADP-ribose) transferase. The basic residues within the N-terminal region of this protein may bear potential DNA-binding properties, and may be involved in the nuclear and/or nucleolar targeting of protein.



[View online »](#)

Synonyms: ADPRT2; ADPRTL2; ADPRTL3; ARTD2; pADPRT-2; PARP-2

Note: Immunogen Sequence Homology: Human: 100%; Pig: 92%; Rat: 92%; Guinea pig: 92%; Dog: 86%; Horse: 86%; Mouse: 86%; Bovine: 86%; Rabbit: 86%

Protein Families: Druggable Genome

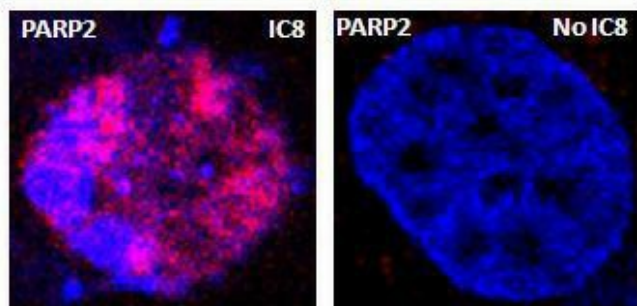
Protein Pathways: Base excision repair

Product images:



PARP2

WB Suggested Anti-PARP2 Antibody Titration: 0.2-1 ug/ml; Positive Control: Raji cell lysate PARP2 is strongly supported by BioGPS gene expression data to be expressed in Human Raji cells



**Red: PARP2
Blue: DAPI**

Sample Type. Rat thyrocytes-FRTL-5 Primary Antibody Dilution. 1:100 Secondary Antibody. Anti-rabbit-Texas Red Secondary Antibody Dilution. 1:100 Color/Signal Descriptions. Red: PARP2 Blue: DAPI Gene Name. PARP2 Submitted by. Syed A Morshed, Mount Si