

Product datasheet for **TA334261**

PARP2 Rabbit Polyclonal Antibody

Product data:

Product Type:	Primary Antibodies
Applications:	WB
Recommended Dilution:	WB
Reactivity:	Human
Host:	Rabbit
Isotype:	IgG
Clonality:	Polyclonal
Immunogen:	The immunogen for anti-PARP2 antibody is: synthetic peptide directed towards the C-terminal region of Human PARP2. Synthetic peptide located within the following region: QCNELLEANPKAEGLLQGKHSTKGLGKMAPSSAHFVTLNGSTVPLGPASD
Formulation:	Liquid. Purified antibody supplied in 1x PBS buffer with 0.09% (w/v) sodium azide and 2% sucrose. <i>Note that this product is shipped as lyophilized powder to China customers.</i>
Purification:	Affinity Purified
Conjugation:	Unconjugated
Storage:	Store at -20°C as received.
Stability:	Stable for 12 months from date of receipt.
Predicted Protein Size:	62 kDa
Gene Name:	poly(ADP-ribose) polymerase 2
Database Link:	NP_001036083 Entrez Gene 10038 Human Q9UGN5
Background:	PARP2 is involved in the base excision repair (BER) pathway, by catalyzing the poly(ADP-ribose)ation of a limited number of acceptor proteins involved in chromatin architecture and in DNA metabolism. This modification follows DNA damages and appears as an obligatory step in a detection/signaling pathway leading to the reparation of DNA strand breaks.
Synonyms:	ADPRT2; ADPRTL2; ADPRTL3; ARTD2; pADPRT-2; PARP-2



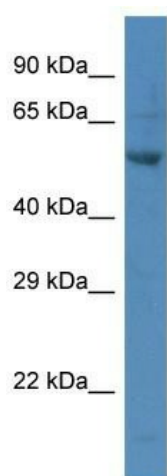
[View online »](#)

Note: Immunogen Sequence Homology: Pig: 100%; Rat: 100%; Horse: 100%; Human: 100%; Bovine: 100%; Rabbit: 100%; Guinea pig: 100%; Dog: 92%; Mouse: 85%

Protein Families: Druggable Genome

Protein Pathways: Base excision repair

Product images:



Host: Rabbit

Target Name: PARP2

Sample Tissue: MCF7 Cell Lysate

Antibody Dilution: 1.0µg/ml

Host: Rabbit; Target Name: PARP2; Sample Tissue: MCF7 Whole Cell lysates; Antibody Dilution: 1.0 ug/ml