

Product datasheet for **TA334254**

FOXP2 Rabbit Polyclonal Antibody

Product data:

Product Type:	Primary Antibodies
Applications:	IHC, WB
Recommended Dilution:	IHC, WB
Reactivity:	Human
Host:	Rabbit
Isotype:	IgG
Clonality:	Polyclonal
Immunogen:	The immunogen for anti-FOXP2 antibody: synthetic peptide directed towards the N terminal of human FOXP2. Synthetic peptide located within the following region: SGLKSPKSSDKQRPLQVPVSVAMMTPQVITPQQMQQILQQQVLSPQQQLQA
Formulation:	Liquid. Purified antibody supplied in 1x PBS buffer with 0.09% (w/v) sodium azide and 2% sucrose. <i>Note that this product is shipped as lyophilized powder to China customers.</i>
Purification:	Affinity Purified
Conjugation:	Unconjugated
Storage:	Store at -20°C as received.
Stability:	Stable for 12 months from date of receipt.
Predicted Protein Size:	80 kDa
Gene Name:	forkhead box P2
Database Link:	NP_055306 Entrez Gene 93986 Human O15409



[View online »](#)

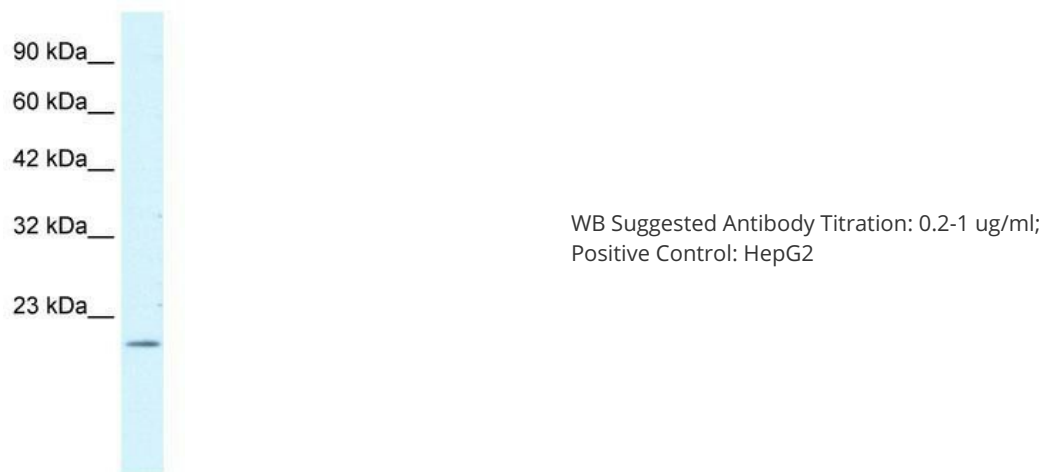
Background: FOXP2 is an evolutionarily conserved transcription factor expressed in fetal and adult brain. This transcription factor is a member of the forkhead/winged-helix (FOX) family of transcription factors, and contains a FOX DNA-binding domain and a large polyglutamine tract. Members of the FOX family of transcription factors are regulators of embryogenesis. The product of this gene is thought to be required for proper development of speech and language regions of the brain during embryogenesis. Although a point mutation in this gene has been associated with the KE pedigree segregating developmental verbal dyspraxia, no association between mutations in this gene and another speech disorder, autism, has been found. Four alternative transcripts encoding three different isoforms have been identified.

Synonyms: CAGH44; SPCH1; TNRC10

Note: Immunogen Sequence Homology: Dog: 100%; Pig: 100%; Rat: 100%; Goat: 100%; Horse: 100%; Human: 100%; Rabbit: 100%; Mouse: 93%; Zebrafish: 82%

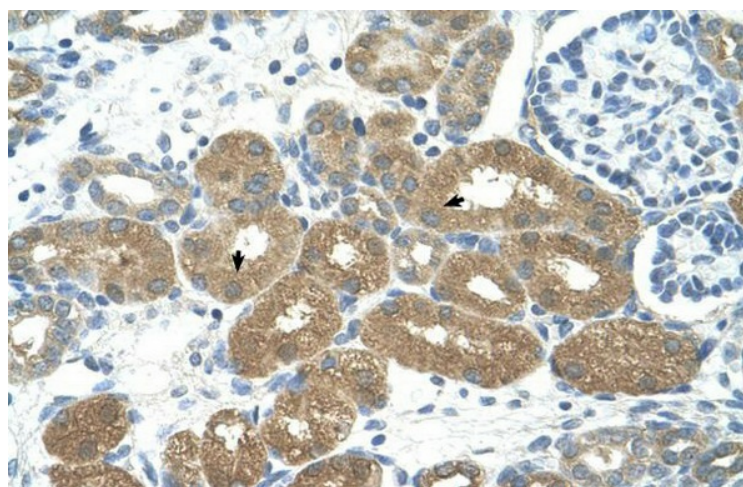
Protein Families: Transcription Factors

Product images:





WB Suggested Anti-FOXP2 Antibody; Titration: 0.5 ug/ml; Positive Control: HepG2 cell lysate



Rabbit Anti-FOXP2 Antibody; Paraffin Embedded Tissue: Human Kidney; Cellular Data: Epithelial cells of renal tubule; Antibody Concentration: 4.0-8.0 ug/ml; Magnification: 400X