

## Product datasheet for **TA334249**

### CRSP8 (MED27) Rabbit Polyclonal Antibody

#### Product data:

Product Type:	Primary Antibodies
Applications:	WB
Recommended Dilution:	WB
Reactivity:	Human
Host:	Rabbit
Isotype:	IgG
Clonality:	Polyclonal
Immunogen:	The immunogen for anti-MED27 antibody: synthetic peptide directed towards the middle region of human MED27. Synthetic peptide located within the following region: LSRPNGTSAMLLVTLGKVLKVIVVMRSLFIDRTIVKGYNENVYTEDGKLD
Formulation:	Liquid. Purified antibody supplied in 1x PBS buffer with 0.09% (w/v) sodium azide and 2% sucrose.
Purification:	Affinity Purified
Conjugation:	Unconjugated
Storage:	Store at -20°C as received.
Stability:	Stable for 12 months from date of receipt.
Predicted Protein Size:	35 kDa
Gene Name:	mediator complex subunit 27
Database Link:	<a href="#">NP_004260</a> <a href="#">Entrez Gene 9442 Human</a> <a href="#">Q6P2C8</a>



[View online »](#)

**Background:**

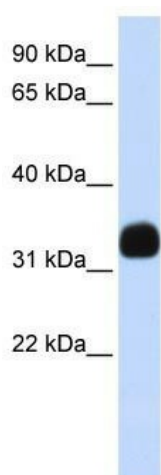
The activation of gene transcription is a multistep process that is triggered by factors that recognize transcriptional enhancer sites in DNA. These factors work with co-activators to direct transcriptional initiation by the RNA polymerase II apparatus. MED27 is a subunit of the CRSP (cofactor required for SP1 activation) complex, which, along with TFIID, is required for efficient activation by SP1. This protein is also a component of other multisubunit complexes e.g. thyroid hormone receptor-(TR-) associated proteins which interact with TR and facilitate TR function on DNA templates in conjunction with initiation factors and cofactors. The activation of gene transcription is a multistep process that is triggered by factors that recognize transcriptional enhancer sites in DNA. These factors work with co-activators to direct transcriptional initiation by the RNA polymerase II apparatus. The protein encoded by this gene is a subunit of the CRSP (cofactor required for SP1 activation) complex, which, along with TFIID, is required for efficient activation by SP1. This protein is also a component of other multisubunit complexes e.g. thyroid hormone receptor-(TR-) associated proteins which interact with TR and facilitate TR function on DNA templates in conjunction with initiation factors and cofactors.

**Synonyms:**

CRAP34; CRSP8; CRSP34; MED3; TRAP37

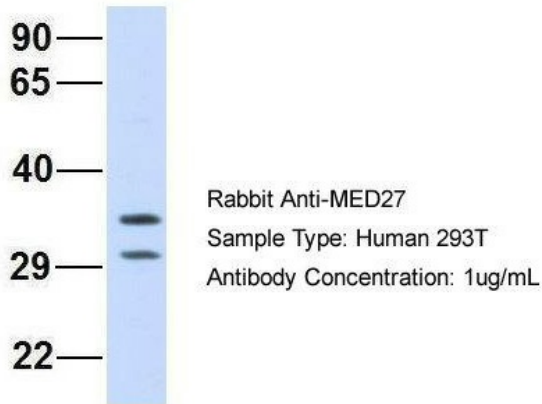
**Note:**

Immunogen Sequence Homology: Pig: 100%; Rat: 100%; Horse: 100%; Human: 100%; Bovine: 100%; Guinea pig: 100%; Mouse: 92%; Dog: 85%; Rabbit: 85%

**Product images:**


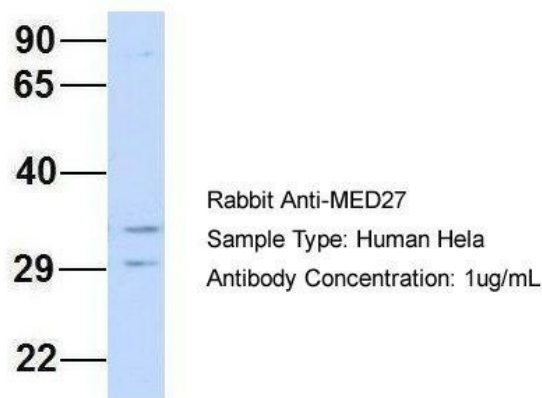
WB Suggested Anti-MED27 Antibody Titration:  
0.2-1 ug/ml; ELISA Titer: 1:62500; Positive Control:  
Human brain

## MED27



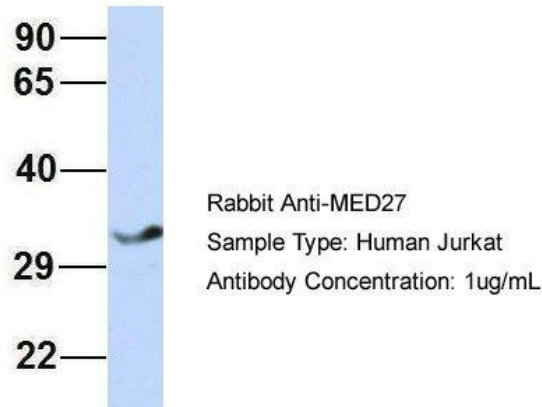
Host: Rabbit; Target Name: MED27; Sample Tissue: 293T; Antibody Dilution: 1.0 µg/ml; MED27 is strongly supported by BioGPS gene expression data to be expressed in HEK293T

## MED27

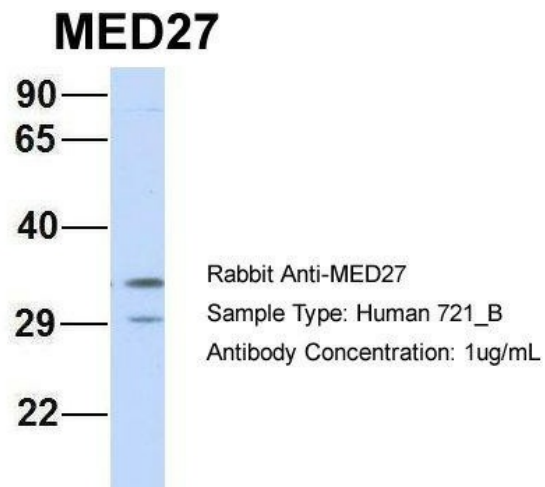


Host: Rabbit; Target Name: MED27; Sample Tissue: HeLa; Antibody Dilution: 1.0 µg/ml; MED27 is strongly supported by BioGPS gene expression data to be expressed in HeLa

## MED27



Host: Rabbit; Target Name: MED27; Sample Tissue: Jurkat; Antibody Dilution: 1.0 µg/ml; MED27 is strongly supported by BioGPS gene expression data to be expressed in Jurkat



Host: Rabbit; Target Name: MED27; Sample Tissue: 721\_B; Antibody Dilution: 1.0 ug/ml; MED27 is strongly supported by BioGPS gene expression data to be expressed in Human 721\_B cells