

Product datasheet for **TA334248**

CRSP9 (MED7) Rabbit Polyclonal Antibody

Product data:

Product Type:	Primary Antibodies
Applications:	IHC, WB
Recommended Dilution:	WB, IHC
Reactivity:	Human
Host:	Rabbit
Isotype:	IgG
Clonality:	Polyclonal
Immunogen:	The immunogen for anti-CRSP9 antibody: synthetic peptide directed towards the N terminal of human CRSP9. Synthetic peptide located within the following region: MGEPQQVSALPPPPMQYIKEYTDENIQEGLAPKPPPIKDSYMMFGNQFQ
Formulation:	Liquid. Purified antibody supplied in 1x PBS buffer with 0.09% (w/v) sodium azide and 2% sucrose. <i>Note that this product is shipped as lyophilized powder to China customers.</i>
Purification:	Affinity Purified
Conjugation:	Unconjugated
Storage:	Store at -20°C as received.
Stability:	Stable for 12 months from date of receipt.
Predicted Protein Size:	27 kDa
Gene Name:	mediator complex subunit 7
Database Link:	NP_004261 Entrez Gene 9443 Human O43513



[View online »](#)

Background:

The activation of gene transcription is a multistep process that is triggered by factors that recognize transcriptional enhancer sites in DNA. These factors work with co-activators to direct transcriptional initiation by the RNA polymerase II apparatus. The protein encoded by this gene is a subunit of the CRSP (cofactor required for SP1 activation) complex, which, along with TFIID, is required for efficient activation by SP1. This protein is also a component of other multisubunit complexes e.g. thyroid hormone receptor-(TR-) associated proteins which interact with TR and facilitate TR function on DNA templates in conjunction with initiation factors and cofactors. Two transcript variants encoding the same protein have been found for this gene. [provided by RefSeq, Jul 2008]

Synonyms:

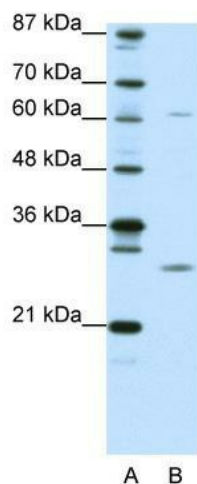
ARC34; CRSP9; CRSP33

Note:

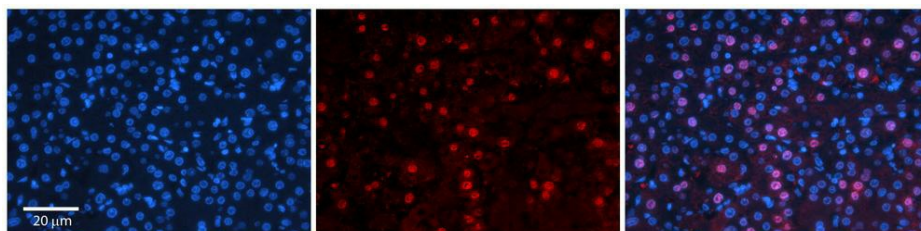
Immunogen Sequence Homology: Dog: 100%; Pig: 100%; Rat: 100%; Horse: 100%; Human: 100%; Mouse: 100%; Bovine: 100%; Rabbit: 100%; Guinea pig: 100%; Zebrafish: 79%

Protein Families:

Druggable Genome, Transcription Factors

Product images:

WB Suggested Anti-CRSP9 Antibody Titration: 0.2-1 ug/ml; ELISA Titer: 1:312500; Positive Control: 293T cell lysateMED7 is supported by BioGPS gene expression data to be expressed in HEK293T



Rabbit Anti-CRSP9 Antibody; Formalin Fixed Paraffin Embedded Tissue: Human Adult Liver; Observed Staining: Nuclear (strong) in hepatocytes, strong signal, wide tissue distribution; Primary Antibody Concentration: 1:100; Secondary Antibody: Donkey anti-Ra