

Product datasheet for **TA334247**

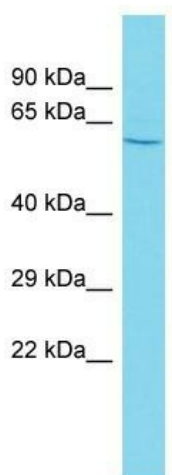
TBX4 Rabbit Polyclonal Antibody

Product data:

Product Type:	Primary Antibodies
Applications:	WB
Recommended Dilution:	WB
Reactivity:	Rat
Host:	Rabbit
Isotype:	IgG
Clonality:	Polyclonal
Immunogen:	The immunogen for Anti-Tbx4 antibody is: synthetic peptide directed towards the N-terminal region of Rat Tbx4. Synthetic peptide located within the following region: DKGLSEEEAFRAPGPPALGETSNSNNTNVPEPALATPGLSGTALSSPPGQ
Formulation:	Liquid. Purified antibody supplied in 1x PBS buffer with 0.09% (w/v) sodium azide and 2% sucrose. <i>Note that this product is shipped as lyophilized powder to China customers.</i>
Purification:	Affinity Purified
Conjugation:	Unconjugated
Storage:	Store at -20°C as received.
Stability:	Stable for 12 months from date of receipt.
Predicted Protein Size:	60 kDa
Gene Name:	T-box 4
Database Link:	NP_060958 Entrez Gene 303399 Rat P57082
Background:	The function of this protein remains unknown.
Synonyms:	ICPPS; SPS
Note:	Immunogen Sequence Homology: Rat: 100%; Human: 100%; Mouse: 100%; Dog: 93%; Bovine: 93%; Rabbit: 93%; Pig: 86%



[View online »](#)

Product images:

Host: Rabbit
Target Name: Tbx4
Sample Tissue: Rat Spleen Lysate
Antibody Dilution: 1.0 μ g/ml

Host: Rabbit; Target Name: Tbx4; Sample Tissue:
Rat Spleen lysates; Antibody Dilution: 1.0 ug/ml