

Product datasheet for **TA334245**

CBF1 interacting corepressor (CIR1) Rabbit Polyclonal Antibody

Product data:

Product Type:	Primary Antibodies
Applications:	WB
Recommended Dilution:	WB
Reactivity:	Human
Host:	Rabbit
Isotype:	IgG
Clonality:	Polyclonal
Immunogen:	The immunogen for anti-CIR antibody: synthetic peptide directed towards the middle region of human CIR. Synthetic peptide located within the following region: SGFALKRNVLGRNLTANDPSQEYVASEGEEDPEVEFLKSLTTKQKQKLLR
Formulation:	Liquid. Purified antibody supplied in 1x PBS buffer with 0.09% (w/v) sodium azide and 2% sucrose. <i>Note that this product is shipped as lyophilized powder to China customers.</i>
Purification:	Affinity Purified
Conjugation:	Unconjugated
Storage:	Store at -20°C as received.
Stability:	Stable for 12 months from date of receipt.
Predicted Protein Size:	34 kDa
Gene Name:	corepressor interacting with RBPJ, 1
Database Link:	NP_004873 Entrez Gene 9541 Human Q86X95
Background:	CIR may modulate splice site selection during alternative splicing of pre-mRNAs. CIR regulates transcription and acts as corepressor for RBPSUH by recruiting RBPSUH to the Sin3-histone deacetylase complex (HDAC). CIR is also required for RBPSUH-mediated repression of transcription.
Synonyms:	CIR



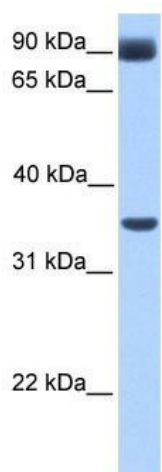
[View online »](#)

Note: Immunogen Sequence Homology: Pig: 100%; Rat: 100%; Horse: 100%; Human: 100%; Mouse: 100%; Bovine: 100%; Rabbit: 100%; Zebrafish: 100%; Guinea pig: 100%

Protein Families: Transcription Factors

Protein Pathways: Notch signaling pathway

Product images:



WB Suggested Anti-CIR Antibody Titration: 0.2-1 ug/ml; Positive Control: Human Muscle