

## Product datasheet for **TA334244**

### CBF1 interacting corepressor (CIR1) Rabbit Polyclonal Antibody

#### Product data:

Product Type:	Primary Antibodies
Applications:	WB
Recommended Dilution:	WB
Reactivity:	Human
Host:	Rabbit
Isotype:	IgG
Clonality:	Polyclonal
Immunogen:	The immunogen for Anti-CIR1 antibody is: synthetic peptide directed towards the middle region of Human CIR1. Synthetic peptide located within the following region: GRNLTANDPSQEYVASEGEEDPEVEFLKSLTTKQKQKLLRKLDRLEKKKK
Formulation:	Liquid. Purified antibody supplied in 1x PBS buffer with 0.09% (w/v) sodium azide and 2% sucrose. <i>Note that this product is shipped as lyophilized powder to China customers.</i>
Purification:	Affinity Purified
Conjugation:	Unconjugated
Storage:	Store at -20°C as received.
Stability:	Stable for 12 months from date of receipt.
Predicted Protein Size:	52 kDa
Gene Name:	corepressor interacting with RBPJ, 1
Database Link:	<a href="#">NP_004873</a> <a href="#">Entrez Gene 9541 Human</a> <a href="#">Q86X95</a>
Background:	CIR may modulate splice site selection during alternative splicing of pre-mRNAs. CIR regulates transcription and acts as corepressor for RBPSUH by recruiting RBPSUH to the Sin3-histone deacetylase complex (HDAC). CIR is also required for RBPSUH-mediated repression of transcription.
Synonyms:	CIR



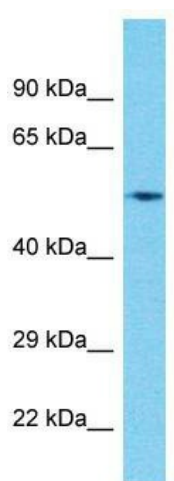
[View online »](#)

**Note:** Immunogen Sequence Homology: Pig: 100%; Rat: 100%; Horse: 100%; Human: 100%; Mouse: 100%; Yeast: 100%; Bovine: 100%; Rabbit: 100%; Zebrafish: 100%

**Protein Families:** Transcription Factors

**Protein Pathways:** Notch signaling pathway

**Product images:**



Host: Rabbit; Target Name: CIR1; Sample Tissue: Pancreas Tumor lysates; Antibody Dilution: 1.0 ug/ml