

Product datasheet for **TA334238**

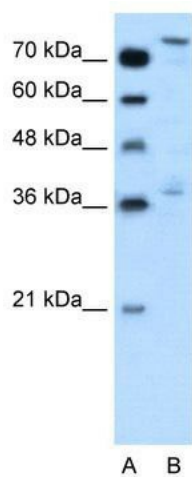
NFE2L3 Rabbit Polyclonal Antibody

Product data:

Product Type:	Primary Antibodies
Applications:	WB
Recommended Dilution:	WB
Reactivity:	Human
Host:	Rabbit
Isotype:	IgG
Clonality:	Polyclonal
Immunogen:	The immunogen for anti-NFE2L3 antibody: synthetic peptide directed towards the middle region of human NFE2L3. Synthetic peptide located within the following region: NPEQTLPGTNLTGFLSPVDNHMRNLTSQDLLYDLIDINIFDEINLMSLATE
Formulation:	Liquid. Purified antibody supplied in 1x PBS buffer with 0.09% (w/v) sodium azide and 2% sucrose. <i>Note that this product is shipped as lyophilized powder to China customers.</i>
Purification:	Affinity Purified
Conjugation:	Unconjugated
Storage:	Store at -20°C as received.
Stability:	Stable for 12 months from date of receipt.
Predicted Protein Size:	76 kDa
Gene Name:	nuclear factor, erythroid 2 like 3
Database Link:	NP_004280 Entrez Gene 9603 Human Q9Y4A8
Background:	NFE2L3 activates erythroid-specific, globin gene expression.
Synonyms:	NRF3
Note:	Immunogen Sequence Homology: Human: 100%; Dog: 93%; Rat: 93%; Mouse: 93%; Rabbit: 92%; Pig: 86%; Bovine: 86%; Guinea pig: 86%
Protein Families:	Transcription Factors, Transmembrane



[View online »](#)

Product images:

WB Suggested Anti-NFE2L3 Antibody Titration:
0.2-1 ug/ml; Positive Control: HepG2 cell lysate