

Product datasheet for **TA334235**

Mortality Factor 4 like 2 (MORF4L2) Rabbit Polyclonal Antibody

Product data:

Product Type:	Primary Antibodies
Applications:	IHC, WB
Recommended Dilution:	WB, IHC
Reactivity:	Human
Host:	Rabbit
Isotype:	IgG
Clonality:	Polyclonal
Immunogen:	The immunogen for anti-MORF4L2 antibody: synthetic peptide directed towards the N terminal of human MORF4L2. Synthetic peptide located within the following region: MSSRKQGSQPRGQQSAEEENFKKPTRS NMQRSKMRGASSGKKTAGPQQKN
Formulation:	Liquid. Purified antibody supplied in 1x PBS buffer with 0.09% (w/v) sodium azide and 2% sucrose. <i>Note that this product is shipped as lyophilized powder to China customers.</i>
Purification:	Protein A purified
Conjugation:	Unconjugated
Storage:	Store at -20°C as received.
Stability:	Stable for 12 months from date of receipt.
Predicted Protein Size:	32 kDa
Gene Name:	mortality factor 4 like 2
Database Link:	NP_036418 Entrez Gene 9643 Human Q15014
Background:	MORF4L2 is a member of the mortality factor (MORF) family of putative transcriptional regulators
Synonyms:	MORFL2; MRGX
Note:	Immunogen Sequence Homology: Human: 100%; Dog: 92%; Pig: 92%; Rat: 92%; Horse: 92%; Mouse: 92%; Rabbit: 92%; Yeast: 91%; Bovine: 85%; Guinea pig: 85%



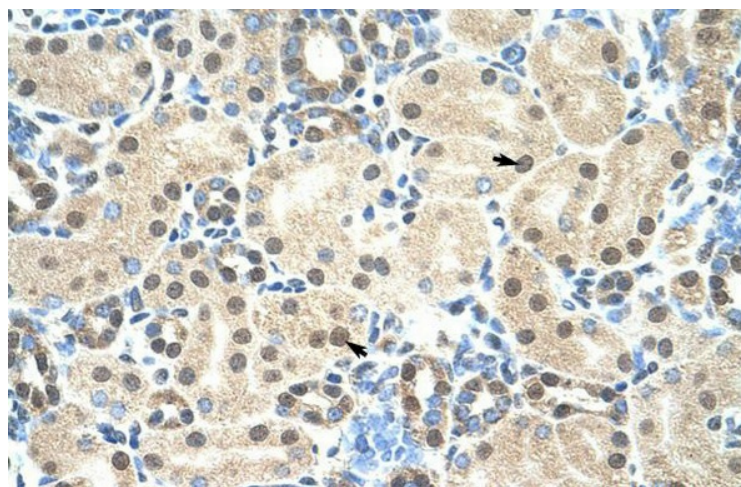
[View online »](#)

Protein Families: Transcription Factors

Product images:



WB Suggested Anti-MORF4L2 Antibody Titration: 1.25 ug/ml; Positive Control: HepG2 cell lysate



Human kidney