

## Product datasheet for **TA334234**

### ST18 Rabbit Polyclonal Antibody

#### Product data:

Product Type:	Primary Antibodies
Applications:	IHC, WB
Recommended Dilution:	WB, IHC
Reactivity:	Human
Host:	Rabbit
Isotype:	IgG
Clonality:	Polyclonal
Immunogen:	The immunogen for anti-ST18 antibody: synthetic peptide directed towards the middle region of human ST18. Synthetic peptide located within the following region: VIKKGKVSEELMTIKLKATGGIESDEEIRHLDEEIKELNESNLKIEADMM
Formulation:	Liquid. Purified antibody supplied in 1x PBS buffer with 0.09% (w/v) sodium azide and 2% sucrose. <i>Note that this product is shipped as lyophilized powder to China customers.</i>
Purification:	Affinity Purified
Conjugation:	Unconjugated
Storage:	Store at -20°C as received.
Stability:	Stable for 12 months from date of receipt.
Predicted Protein Size:	115 kDa
Gene Name:	ST18, C2H2C-type zinc finger
Database Link:	<a href="#">NP_055497</a> <a href="#">Entrez Gene 9705 Human</a> <a href="#">O60284</a>
Background:	ST18 repressor that binds to DNA sequences containing a bipartite element consisting of a direct repeat of the sequence 5'-AAAGTTT-3' separated by 2-9 nucleotides. ST18 represses basal transcription activity from target promoters. ST18 inhibits colony formation in cultured breast cancer cells.
Synonyms:	NZF3; ZC2HC10; ZNF387

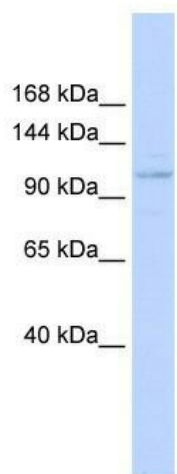


[View online »](#)

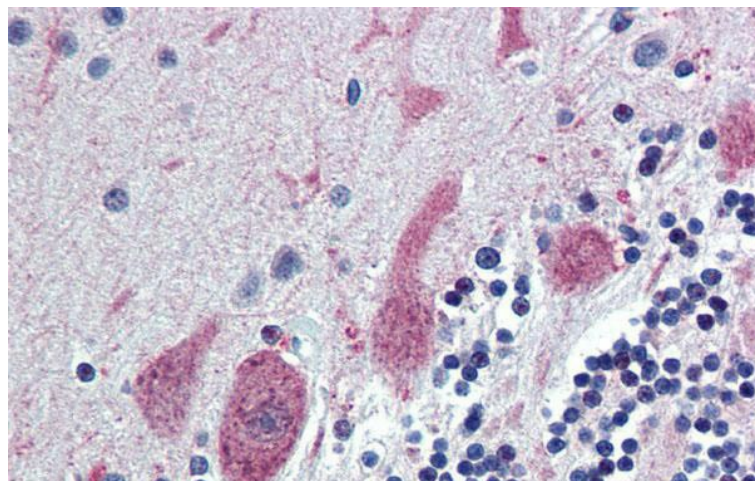
**Note:** Immunogen Sequence Homology: Pig: 100%; Rat: 100%; Horse: 100%; Human: 100%; Mouse: 100%; Rabbit: 100%; Dog: 93%; Bovine: 86%; Guinea pig: 86%

**Protein Families:** Transcription Factors

**Product images:**



WB Suggested Anti-ST18 Antibody Titration: 0.2-1 ug/ml; ELISA Titer: 1:312500; Positive Control: Hela cell lysate



Immunohistochemistry with Human Brain, cerebellum tissue at an antibody concentration of 5.0 ug/ml using anti-ST18 antibody